

wright flow

TECHNOLOGIES

Revolution™

Extreme durability & In Place Cleanability



TYPICAL APPLICATIONS

Food, Beverage, Pharmaceuticals, Bio-Pharmaceuticals, Personal Care, Chemical, and other demanding Industries



Times are changing, Increase your expectations!

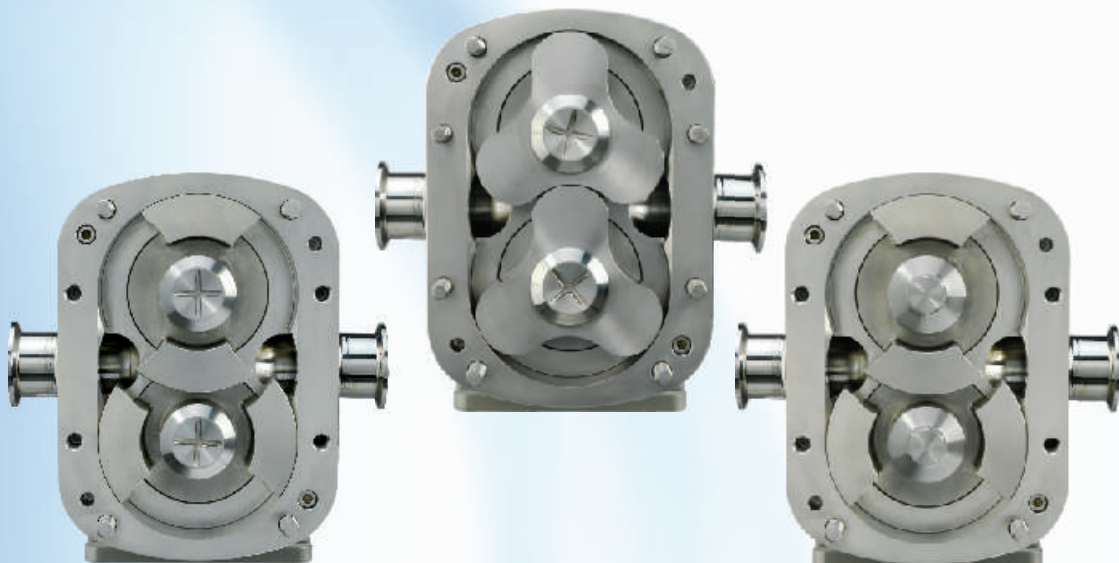
The Revolution™ is the latest innovation of Positive Displacement Pumps for the Sanitary and Industrial Markets, merging the benefits of competing technologies into one platform: Lobe & Circumferential Piston.

If you are interested in lowering your total ownership cost by **up to \$60,000 USD per pump**, and avoiding **up to 160 hrs of downtime per pump**, we encourage you to find out more about how Wright's new Revolution™ can help you achieve your productivity goals.

Example:

Value calculated grouped by customer needs	Revolution	Competitor 1 with Adders	Competitor 1 with no Adders	Competitor 2 with Adders	Competitor 2 no Adders
1) Increase product yield 10%		\$21,600	\$21,600	\$21,600	\$21,600
2) Increase lifetime 100%		\$14,923	\$16,784	\$13,127	\$14,988
3) Reduce maintenance expense 50%		\$11,274	\$12,610	\$10,566	\$11,903
4) Reduce the processing systems' installed costs 25%		\$10,000	\$10,000	\$10,000	\$10,000
5) Decrease number of components, footprint, weight to reduce system costs 25-30%		\$3,186	\$3,186	\$3,186	\$3,186
6) Optimization of sizes		\$1,000	\$1,000	\$1,000	\$1,000
Total Value Calculated vs. Competitor		\$61,983	\$65,180	\$59,480	\$62,677
Cost of New Pumps (Model 600 with Flush and Flat Body)	\$11,600	\$8,832	\$8,832	\$10,113	\$10,113
Total Cost to the Customer	\$11,600	\$70,815	\$74,012	\$69,593	\$72,790
Additional Risk of downtime per pump (hrs)	HRS (lifetime)	161.5	162.0	96.5	97.0

*A customized scenario needs to be adapted to fit each customer



Revolution™ the new revolution for positive displacement pumps.....

Construction and Technical Details:

Gear Box

- Std: Powder Coated C.I.
- Opt: Stainless Steel 304.
- Opt: Gamma Seal protection for Gearhousing Oil Seals

Pump Head Surface Finish

- Std: 0.8 µm
- Opt: internal finishes:m/c to 0.6µm.
- Opt: Mech. polish to 0.5µm or better.
- Opt: Electropolished
- Optional for non Hygienic applications 1.6µm internals & As Cast externals.

Rotor Case Materials

- Std: AISI 316L
- Opt: Hastelloys and other alloys
- Opt: Cast Iron for low/non hygienic applications
- Opt: Abrasive resistant coatings
- Std: 3A conform Surface Finish

Rotor Materials / Options

- AISI 316L: Std. for RLP Optional for CPP
- Wright 808@ non-galling, nickle-based alloy for CPP
- Opt: Cast Iron for low/non-hygienic applications
- Opt: Hastelloys and other alloys
- Opt: Abrasive Resistant Coating

Rotor Forms:

- Trilobe for RLP (4 Lobe on DL10)
- Double & Single Wing for CPP

Rotor Temperature rating:

- RLP: 100 C, 150 C Option
- CPP: 100 C, 150 C Option
- High Temperature Clearance Option

Shaft Seal Arrangements

- Std: Single Mechanical.
- Opt: Double Mechanical.
- Opt: Single & Double O Ring

Seal Face Matl Combinations Single Seal:

- Std: Carbon vs Silicon Carbide (R)
- Opt: Silicon Carbide vs Silicon Carbide

Double Seal:

- Std: Carbon (S1) Carbon (S2) vs Silicon Carbon (R)
- Opt: Silicon Carbon (S1) Carbon (S2) vs Silicon Carbon (R)

Port Connections

- Complete range of Sanitary Clamp, Screw, Flange and Industrial Screw, etc.
- Optional: Range of Enlarged / Hopper Inlets.

Heating / Cooling Options

- 4.0 Bar operating Pressure
- -20° to +150°C
- All pumps may be fitted with front cover and rotor case jackets when required



Revolution Sizes & Specifications

Size	Pump Type	Model	Rotor	Port Size	Displacement	Displacement	Pressure	Pressure	Max RPM	Maximum Displacement	Maximum Displacement	Same Length as RLP Casing?
					l/rev	USG/rev	Bar	PSI	m3/hr	USG/min		
Size 1	CPP	R0035X	BW	0.75	0.017	0.005	21	305	800	0.8	3.7	Yes
	RLP	R0035X	LO	0.75	0.021	0.005	15	218	1000	1.0	4.4	Yes
	CPP	R0065X	BW	1	0.035	0.009	14	203	800	1.7	7.4	Yes
	RLP	R0065X	LO	1	0.041	0.011	7	102	1000	2.0	8.8	Yes
Size 2	CPP	R0150X	BW	1.5	0.055	0.014	21	305	800	2.6	11.6	Yes
	RLP	R0150X	LO	1.5	0.061	0.016	15	218	1000	2.9	12.8	Yes
	RLP	R0160L	LO	1.5	0.081	0.021	10	145	1000	3.9	17.1	N/a
	CPP	R0180P	BW	1.5	0.110	0.029	14	203	800	5.3	23.2	No
	RLP	R0180L	LO	1.5	0.110	0.029	7	102	1000	5.3	23.3	No
Size 3	CPP	R0200X	BW	1.5	0.16	0.04	21	305	800	8	34	Yes
	RLP	R0200X	LO	1.5	0.18	0.05	14	203	1000	8	37	Yes
	CPP	R0300X	BW	1.5	0.23	0.06	17	247	800	11	48	Yes
	RLP	R0300X	LO	1.5	0.25	0.07	9	131	1000	12	53	Yes
	CPP	R0400X	BW	2	0.29	0.08	14	203	800	14	62	Yes
	RLP	R0400X	LO	2	0.33	0.09	7	102	1000	16	69	Yes
Size 4	CPP	R0450X	BW	2	0.4	0.1	31	450	600	20	90	Yes
	RLP	R0450X	LO	2	0.5	0.1	15	218	800	22	95	Yes
	CPP	R0600P	BW	2.5	0.6	0.2	21	305	600	28	123	N/a
	CPP	R0800X	BW	3	0.8	0.2	17	247	600	37	163	Yes
	RLP	R0800X	LO	2.5	0.8	0.2	9	131	800	39	173	Yes
	CPP	R1300X	BW	3	1.0	0.3	14	203	600	48	212	Yes
	RLP	R1300X	LO	3	1.1	0.3	7	102	800	51	226	Yes
Size 5	CPP	R1800X	BW	3	1.5	0.4	31	450	600	70	309	Yes
	RLP	R1800X	LO	3	1.6	0.4	15	218	600	74	328	Yes
	CPP	R2200X	BW	4	2.0	0.5	21	305	600	95	418	Yes
	RLP	R2200X	LO	4	2.1	0.6	8	116	600	101	444	Yes
	CPP	R2600P	BW	4	2.5	0.7	14	203	600	121	532	N/a
Size 6	RLP	R3000L	LO	4	2.9	0.8	15	218	500	139	612	No
	CPP	R3200P	BW	6	3.1	0.8	21	305	600	149	658	No
	CPP	R3800P	BW	6	3.8	1.0	14	203	600	184	808	No
	RLP	R3800L	LO	6	3.8	1.0	8	116	500	183	807	No
Size 7	RLP	R4000L	LO	6	5.2	1.4	15	218	400	251	1107	No
	CPP	R4200P	BW	6	6.2	1.6	28	400	400	296	1303	No
	RLP	R5000L	LO	8	7.2	1.9	8	116	400	346	1522	No
	CPP	R5200P	BW	8	9.0	2.4	14	200	350	434	1910	No

Product Features and Benefits, main highlights:



Increase product yield and reduce system costs

- Unmatched gentle Solids Handling with unique rotor sizes & shapes
- Reduce the systems' procurement costs through increased pressure ratings, and an substantial offering of new sizes and displacements



Increase equipment lifetime & process uptime - Reduce operating expense

- Front loading seals last two to three times longer
- With increased diameter shafts, pump is able resist more pressure and perform at higher torques.
- Gamma Seal provides additional protection to the gearbox (Optional)



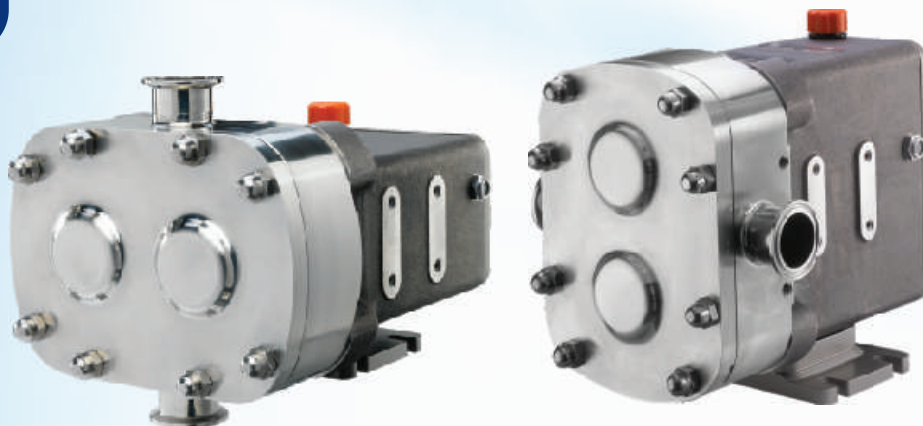
Online Cleanability

- Clean in Place (CIP) cleanability, which complies with stringent sanitary conditions
- Enhanced rotor case geometry enables self draining. This reduces bacteria growth risks without loss of efficiency & saves product.
- Rotor design eliminates seal leak path and seal dead legs.
- No Front Cover dead zones.



Reduce installation & maintenance expense (including spare parts) 50% annually

- Reduced number and common spare parts required within one gearbox-frame.
- Maintenance free lubrication reduces cost of ownership (optional).
- Standard Rotor case hold down bolts prevent seal breakage during routine maintenance.
- Helical gears have approximately double the life than spur gears, and better load carrying capabilities.
- Front Clearance Rotor adjustment is performed externally without the need to Disassemble the gear box.



Wright Flow Technologies

Our products are used across the whole of the process industries in applications as diverse as paper & pulp through to the extreme hygiene end of the pharmaceutical industry. We manufacture within our organisation rotary lobe, centrifugal, circumferential piston, air operated double diaphragm and dosing pumps, all manufactured and designed with hygiene, cleanliness, affordability and robustness in mind.

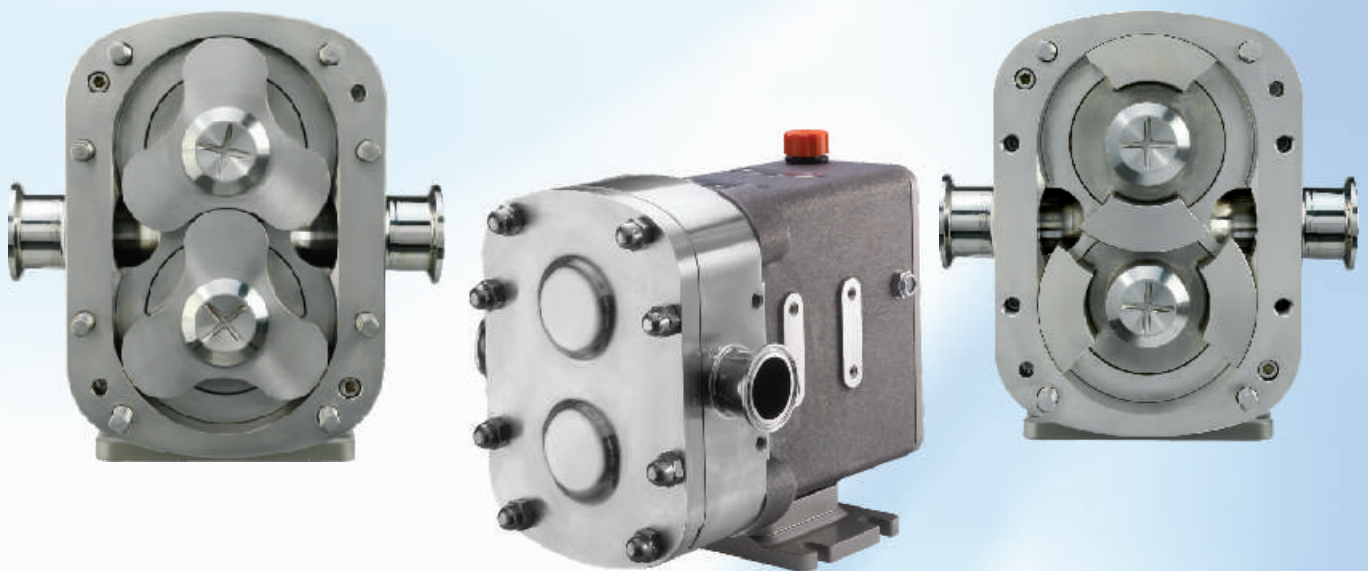
These pumps coupled with our range of hygienic turbine and magnetic flow meters, and our powder mixing technology from Quadro, gives a complete package for the modern high-tech process industries of today.

Remanufacturing in Europe and North America

Wright Flow Technologies offers unique remanufacturing services in Europe and North America for Waukesha® Universal I and Universal II series pumps, as well as Wright Flow Technologies TRA10 and TRA20 series pumps. The new Revolution™ can also be remanufactured up to three times.

Remanufacturing is a lower-cost alternative to buying a new replacement pump and it gets you all of Wright Flow Technologies improved features and benefits.

Ask your distributor, or the factory for more details.



For more information, contact your local authorized Wright Flow Technologies Distributor or contact us at:



Wright Flow Technologies, Inc.
S84 W18693 Enterprise Drive Muskego, WI 53150
Phone: (262) 679-8000 Fax: (262) 679-2026
Email: info.wright@idexcorp.com

Wright Flow Technologies Ltd.
Highfield Industrial Estate, Edison Road Eastbourne
East Sussex, United Kingdom, BN23 6PT
Phone: +44 1323 509211 Fax: +44 1323 507306 E-mail: jinfo@idexcorp.com

ASIA-PACIFIC

China	Beijing	- Phone: +86-10-6522-7567/27	Fax: +86-10-6522-7563
	Chengdu	- Phone: +86-28-86767458	Fax: +86-28-86767468
	Guangzhou	- Phone: +86-20-3886-6156	Fax: +86-20-3886-2776
	Shanghai	- Phone: +86-21-5241 5599	Fax: +86-21-5241 8339
South Asia	India	- Phone: +91-22-6678-0048/53	Fax: +91-22-6678-0055
ASEAN	Singapore	- Phone: +65-6763-6633	Fax: +65-6764-4020
Middle East	Dubai	- Phone: +971-4-225-7978	Fax: +971-4-225-9796
Oceania		- Phone: +61-(0)-4577-4534	Fax: +61-(0)-448-480-640

LATIN AMERICA

Brazil		- Phone: +55-19-3871-3500	Fax: +55-19-3871-6400
Caribbean		- Phone: +1 (305) 740-3365	Fax: +1 (305) 740-3372
Cono Norte/ Central America		- Phone: +57 1 648 2761	Fax: +57 1 274 3453
Cono Sur		- Phone: +1 (803) 234-3004	Fax: +1 (803) 216-7670
Mexico		- Phone: +52 55 5255-1357	Fax: +52 55 5255-1356

Visit us online at:

www.wrightflowtechnologies.com
www.johnsonpump.com
www.wrightpump.com

