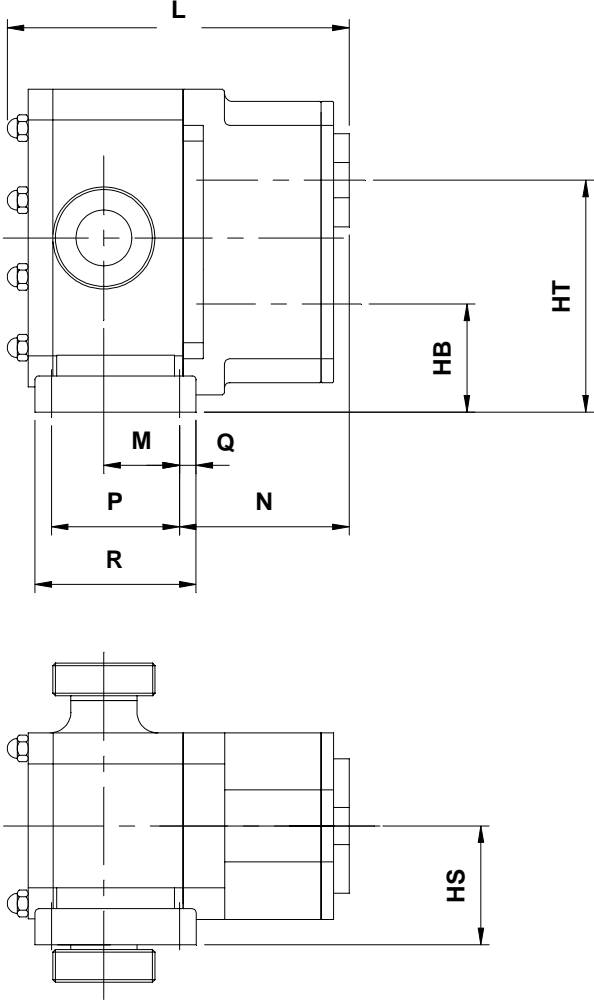
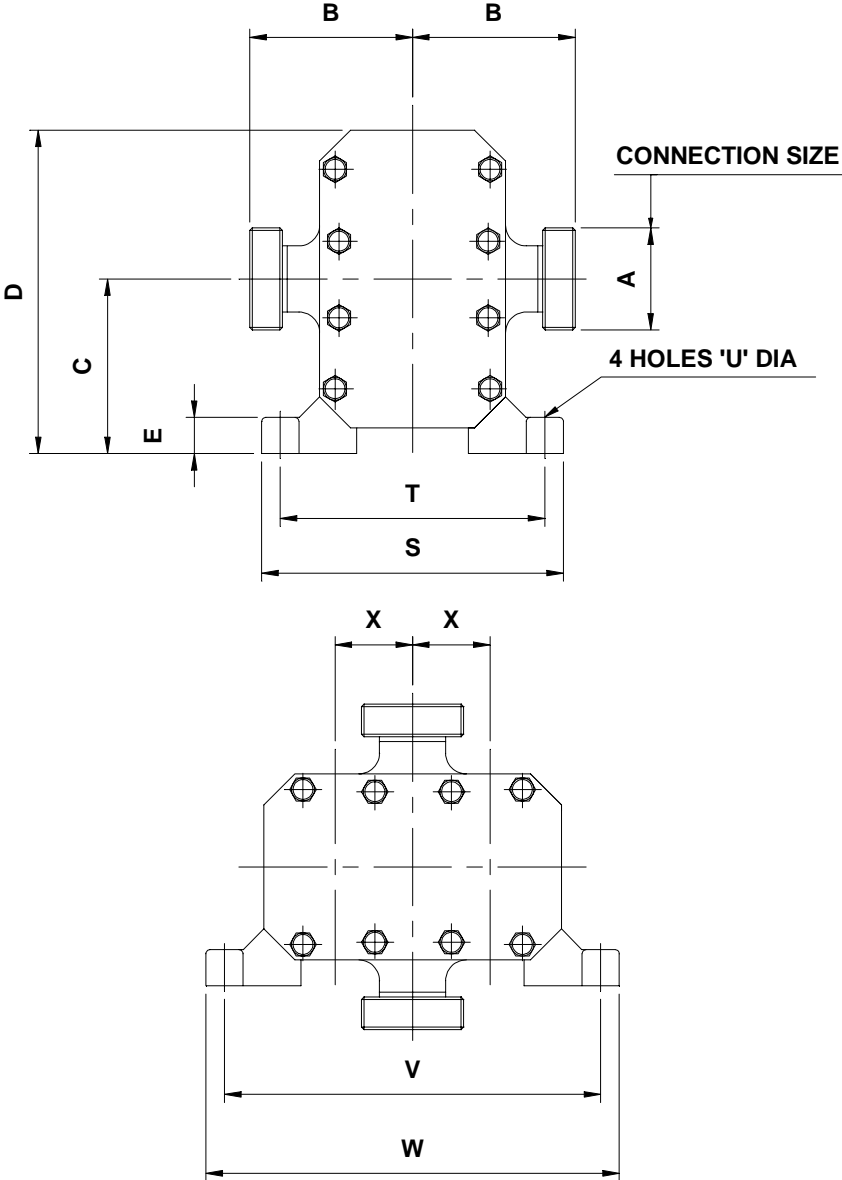


RTP™ Foundation Dimensions.



A	B 1	B 2	B 3	B 4	B 5	C	D	E	HB	HS	HT	L	M	N	P	Q	R	S	T	U	V	W	X	Weight (kg)
80	131	163	145	153	158	157	305	29	97	100	217	311	62	161	124	14	152	243	214	13	329	358	60	67
100	135	178																						

Dimensions in Inches.

A	B 1	B 2	B 3	B 4	B 5	C	D	E	HB	HS	HT	L	M	N	P	Q	R	S	T	U	V	W	X	Weight (lbs)
3"	5.16	6.42	5.71	6.02	6.22	6.18	12.00	1.14	3.86	3.94	8.54	12.05	2.44	6.34	4.88	0.55	5.98	9.57	8.43	0.51	12.95	14.09	2.36	148
4"	5.31	7.01																						

- B1 applies for all threaded connections (including ACME & Triclamp) except BSPT and NPT.
- B2 applies for BSPT and NPT thread connections.
- B3 applies for all flange connections except ASA150, BS4504 and ASA300.
- B4 applies for ASA150 and BS4504 flange connections.
- B5 applies for ASA300 flange connections.

These dimensions are for guidance only – Certified drawings are available on request