



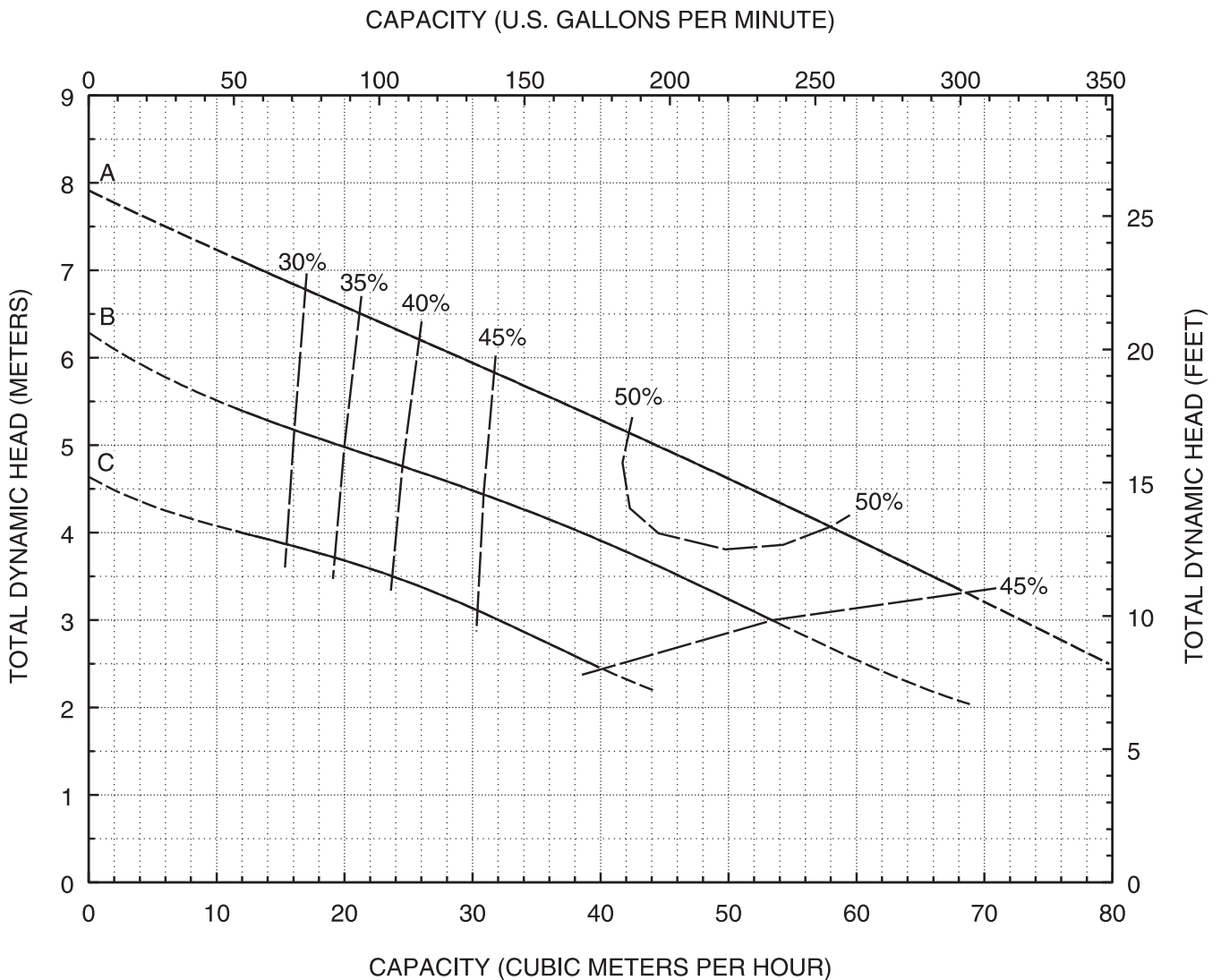
Vertical Wet Well 50 Hz Chopper Pump PERFORMANCE CURVE

Models:
C3F
V3F

CURVE	POWER (KW)	SPEED (RPM)	IMPELLER DIAMETER
A	4	1460	6.50" (165 mm)
B	4	1460	6.00" (152 mm)
C	4	1460	5.50" (140 mm)

2-Blade Impeller
3" ANSI Discharge

DO NOT OPERATE PUMP IN DOTTED PORTION OF CURVES. CURVES SUBJECT TO CHANGE WITHOUT NOTICE. EFFICIENCIES SHOWN ARE NOMINAL BOWL. GUARANTEED MINIMUM EFFICIENCIES ARE PER H.I. LEVEL B.



THIS PERFORMANCE DATA MAY NOT REPRESENT CURRENT DESIGNS. CONTACT VAUGHAN FOR CURRENT DATA.



Vertical Wet Well 50 Hz Chopper Pump PERFORMANCE CURVE

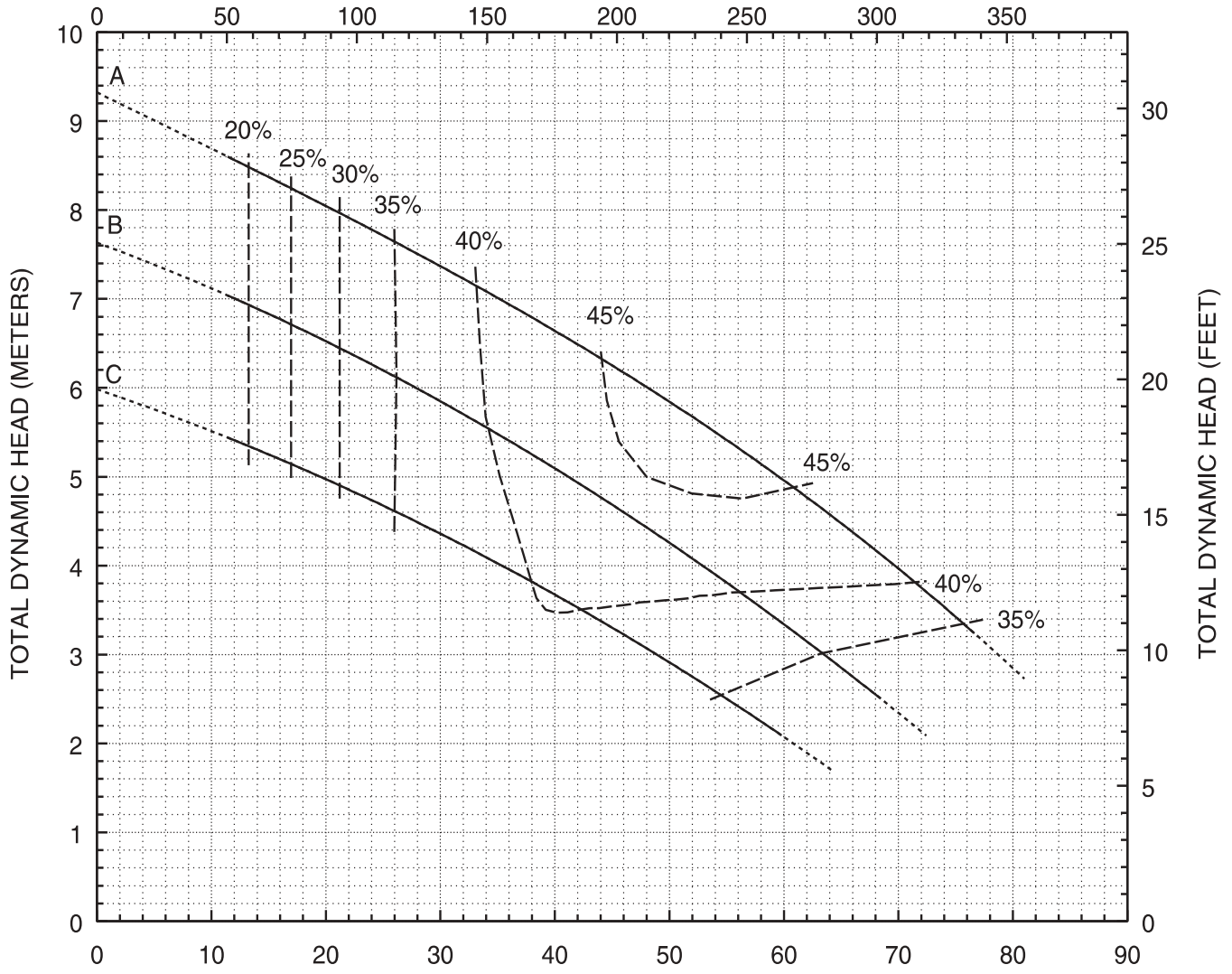
Models:
C3G
V3G

CURVE	POWER (KW)	SPEED (RPM)	IMPELLER DIAMETER
A	4	1460	6.50" (165 mm)
B	4	1460	6.00" (152 mm)
C	4	1460	5.50" (140 mm)

4-Blade Impeller
3" ANSI Discharge

DO NOT OPERATE PUMP IN DOTTED PORTION OF CURVES. CURVES SUBJECT TO CHANGE WITHOUT NOTICE. EFFICIENCIES SHOWN ARE NOMINAL BOWL. GUARANTEED MINIMUM EFFICIENCIES ARE PER H.I. LEVEL B.

CAPACITY (U.S. GALLONS PER MINUTE)



THIS PERFORMANCE DATA MAY NOT REPRESENT CURRENT DESIGNS. CONTACT VAUGHAN FOR CURRENT DATA.

CAPACITY (CUBIC METERS PER HOUR)



Vertical Wet Well 50 Hz Chopper Pump PERFORMANCE CURVE

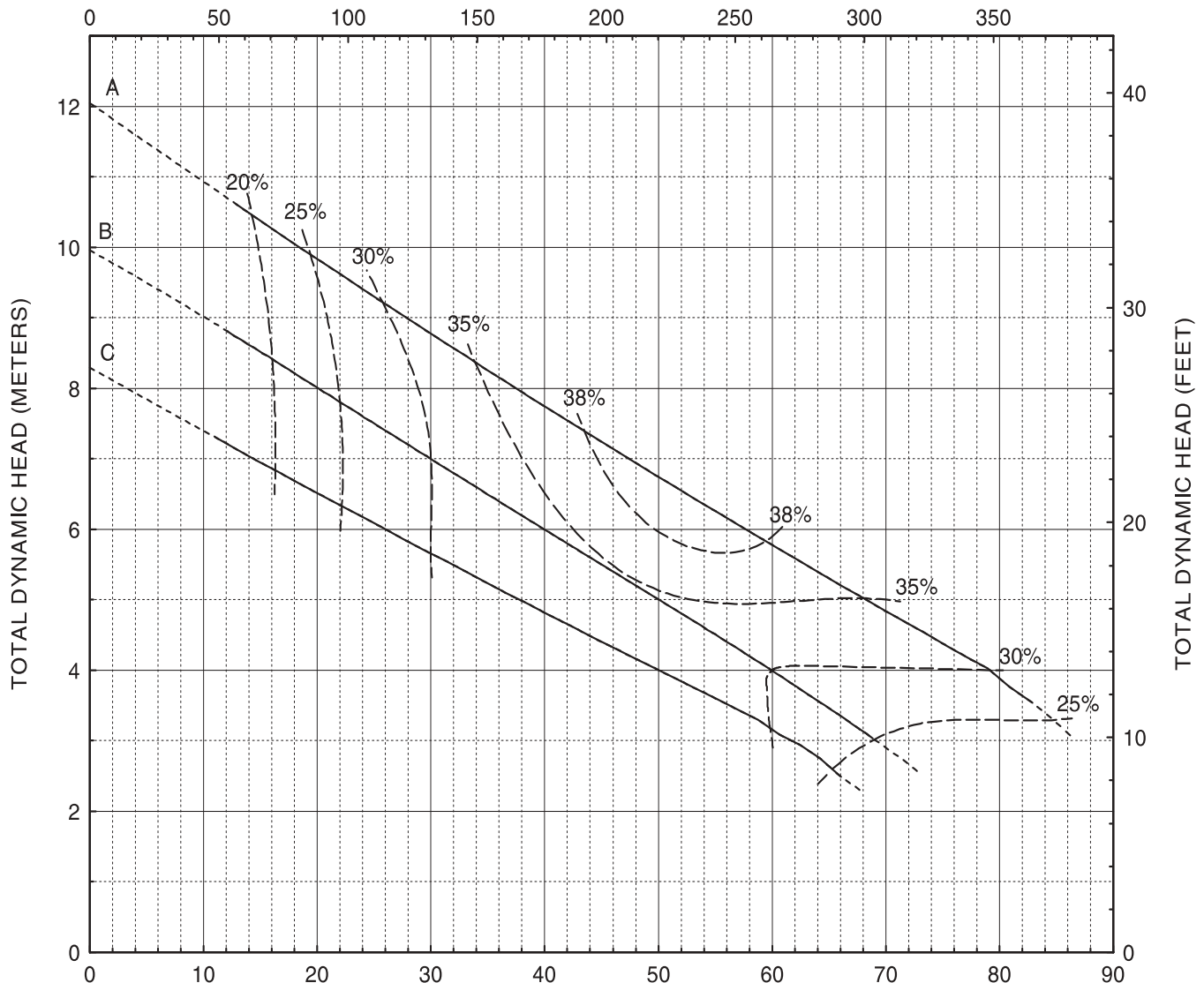
Models:
C3L
V3L

CURVE	POWER (KW)	SPEED (RPM)	IMPELLER DIAMETER
A	5.5	1460	8.00" (203 mm)
B	4	1460	7.50" (191 mm)
C	4	1460	7.00" (178 mm)

3-Blade Impeller
3" Discharge

DO NOT OPERATE PUMP IN DOTTED PORTION OF CURVES. CURVES SUBJECT TO CHANGE WITHOUT NOTICE. EFFICIENCIES SHOWN ARE NOMINAL BOWL. GUARANTEED MINIMUM EFFICIENCIES ARE PER H.I. LEVEL B.

CAPACITY (U.S. GALLONS PER MINUTE)



THIS PERFORMANCE DATA MAY NOT REPRESENT CURRENT DESIGNS. CONTACT VAUGHAN FOR CURRENT DATA.

CAPACITY (CUBIC METERS PER HOUR)



Vertical Wet Well 50 Hz Chopper Pump PERFORMANCE CURVE

Models:
C3L
V3L

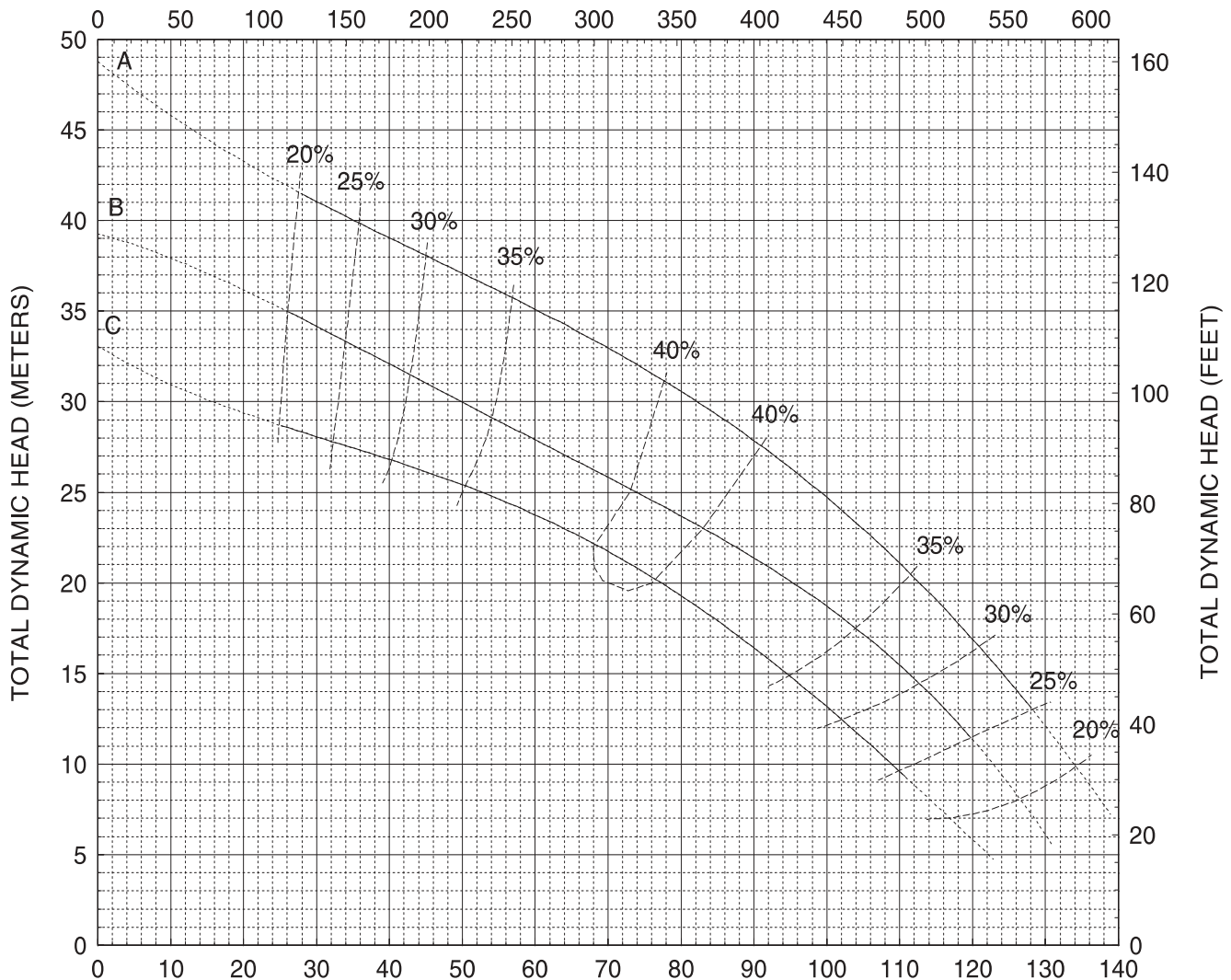
CURVE	POWER (KW)	SPEED (RPM)	IMPELLER DIAMETER
A	18.5*	2900	8.00" (203 mm)
B	15	2900	7.50" (191 mm)
C	11**	2900	7.00" (178 mm)

3-Blade Impeller
3" Discharge

DO NOT OPERATE PUMP IN DOTTED PORTION OF CURVES. CURVES SUBJECT TO CHANGE WITHOUT NOTICE. EFFICIENCIES SHOWN ARE NOMINAL BOWL. GUARANTEED MINIMUM EFFICIENCIES ARE PER H.I. LEVEL B.

* EXCEEDS 18.5 KW BEYOND 110 M³/HR.
** EXCEEDS 11 KW BEYOND 90 M³/HR.

CAPACITY (U.S. GALLONS PER MINUTE)



THIS PERFORMANCE DATA MAY NOT REPRESENT CURRENT DESIGNS. CONTACT VAUGHAN FOR CURRENT DATA.

CAPACITY (CUBIC METERS PER HOUR)

Form 242HP-V3L-2900 11/04



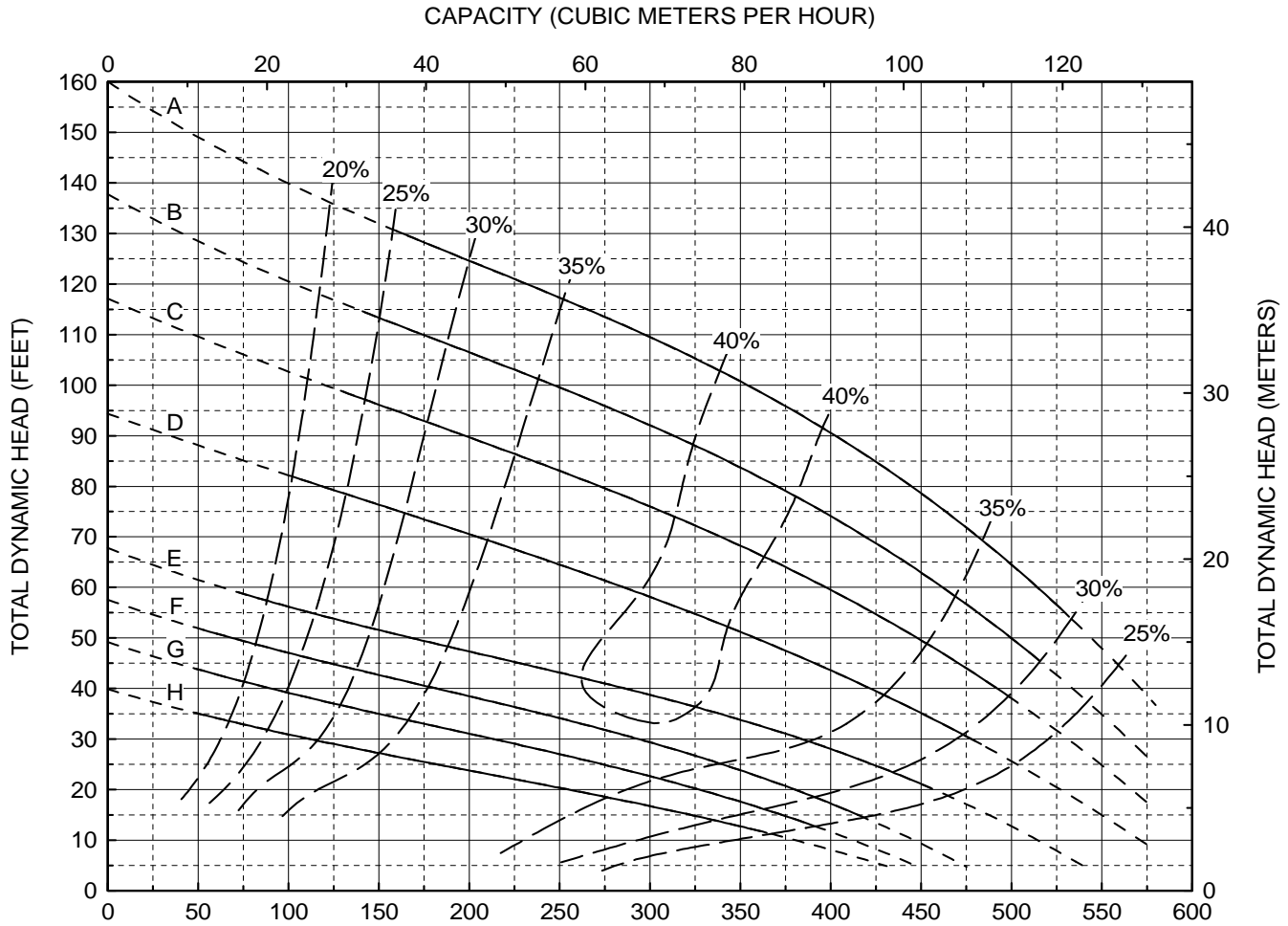
Vertical Wet Well Chopper Pump PERFORMANCE CURVE

Models:
C3L
V3L

3-Blade Impeller
3" Discharge
Variable Speed Curve

CURVE	POWER (HP/KW)	SPEED (RPM)	IMPELLER DIAMETER
A	30 / 22	2900	8.00" (203 mm)
B	25 / 18.5	2700	8.00" (203 mm)
C	20 / 15	2500	8.00" (203 mm)
D	15 / 11	2250	8.00" (203 mm)
E	10 / 7.5	1900	8.00" (203 mm)
F	7.5 / 5.5	1750	8.00" (203 mm)
G	7.5 / 5.5	1600	8.00" (203 mm)
H	5 / 4	1460	8.00" (203 mm)

DO NOT OPERATE PUMP IN DOTTED PORTION OF CURVES. CURVES SUBJECT TO CHANGE WITHOUT NOTICE. EFFICIENCIES SHOWN ARE NOMINAL BOWL. GUARANTEED MINIMUM EFFICIENCIES ARE PER H.I. LEVEL B.



THIS PERFORMANCE DATA MAY NOT REPRESENT CURRENT DESIGNS. CONTACT VAUGHAN FOR CURRENT DATA.



Vertical Wet Well 50 Hz Chopper Pump PERFORMANCE CURVE

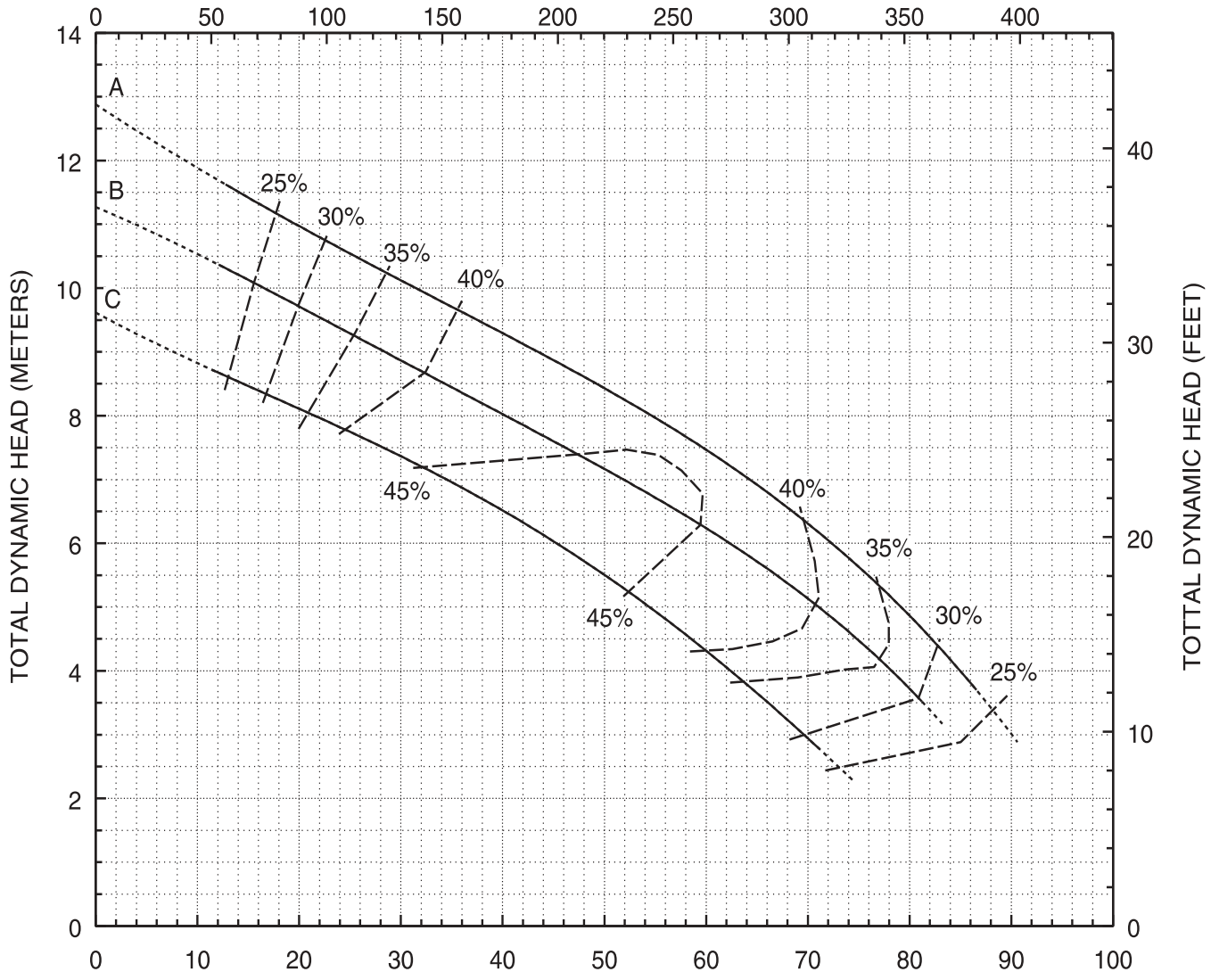
**Models:
C3M
V3M**

CURVE	POWER (KW)	SPEED (RPM)	IMPELLER DIAMETER
A	5.5	1460	8.00" (203 mm)
B	4	1460	7.50" (191 mm)
C	4	1460	7.00" (178 mm)

**5-Blade Impeller
3" Discharge**

DO NOT OPERATE PUMP IN DOTTED PORTION OF CURVES. CURVES SUBJECT TO CHANGE WITHOUT NOTICE. EFFICIENCIES SHOWN ARE NOMINAL BOWL. GUARANTEED MINIMUM EFFICIENCIES ARE PER H.I. LEVEL B.

CAPACITY (U.S. GALLONS PER MINUTE)



THIS PERFORMANCE DATA MAY NOT REPRESENT CURRENT DESIGNS. CONTACT VAUGHAN FOR CURRENT DATA.

CAPACITY (CUBIC METERS PER HOUR)



Vaughan Wet Well 50 Hz Chopper Pump PERFORMANCE CURVE

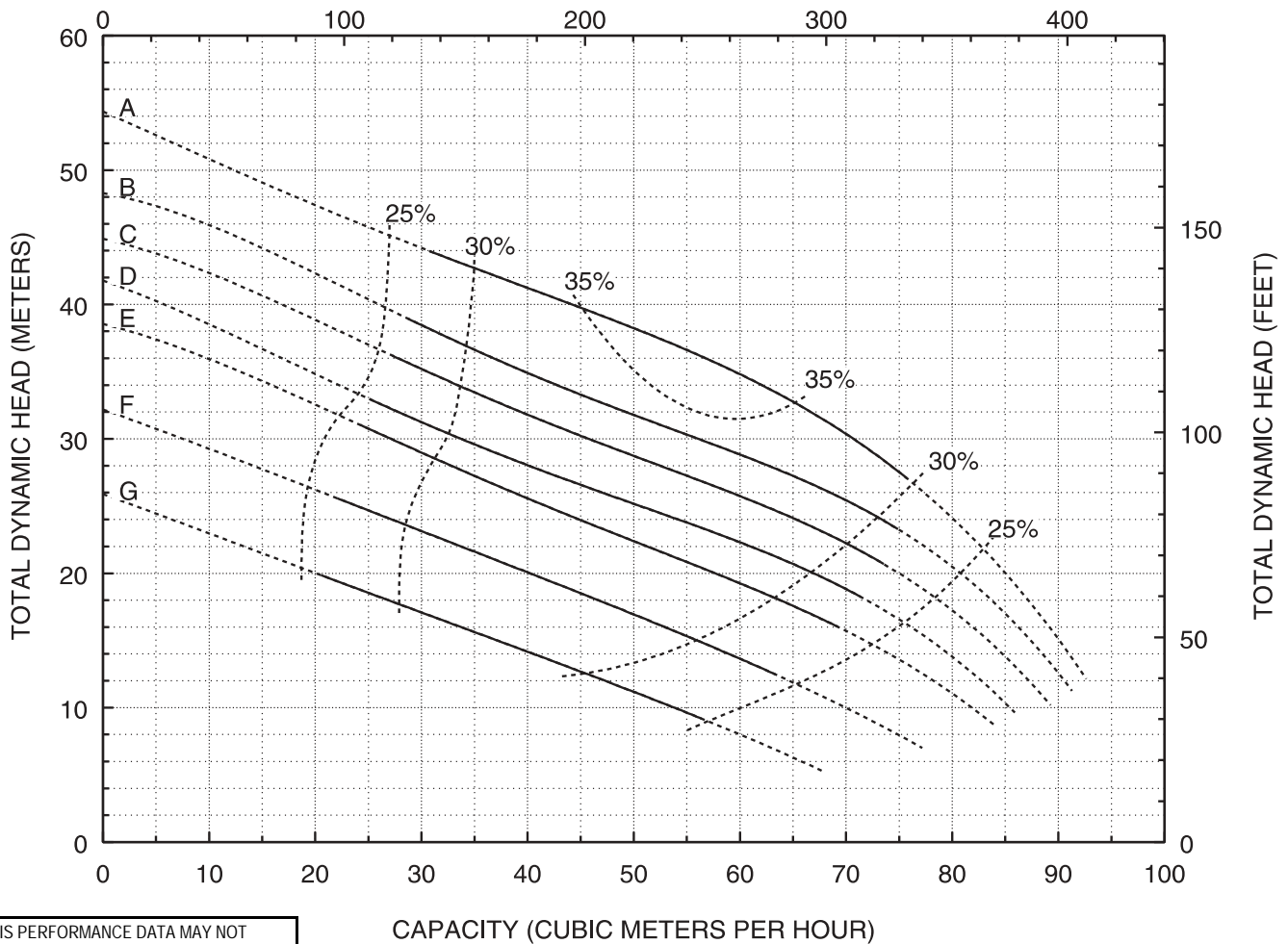
**Model:
V3V**

**3-Blade Impeller
3" Discharge**

CURVE	POWER (KW)	SPEED (RPM)	IMPELLER DIAMETER
A	22	2900	8.00" (203 mm)
B	18.5	2900	7.75" (197 mm)
C	18.5	2900	7.50" (191 mm)
D	15	2900	7.30" (185 mm)
E	15	2900	7.00" (178 mm)
F	11	2900	6.50" (165 mm)
G	9.2	2900	6.00" (152 mm)

DO NOT OPERATE PUMP IN DOTTED PORTION OF CURVES. CURVES SUBJECT TO CHANGE WITHOUT NOTICE. EFFICIENCIES SHOWN ARE NOMINAL BOWL. GUARANTEED MINIMUM EFFICIENCIES ARE PER H.I.I. LEVEL B.

CAPACITY (U.S. GALLONS PER MINUTE)



THIS PERFORMANCE DATA MAY NOT REPRESENT CURRENT DESIGNS. CONTACT VAUGHAN FOR CURRENT DATA.



Vaughan Wet Well 50 Hz Chopper Pump PERFORMANCE CURVE

**Model:
V3W**

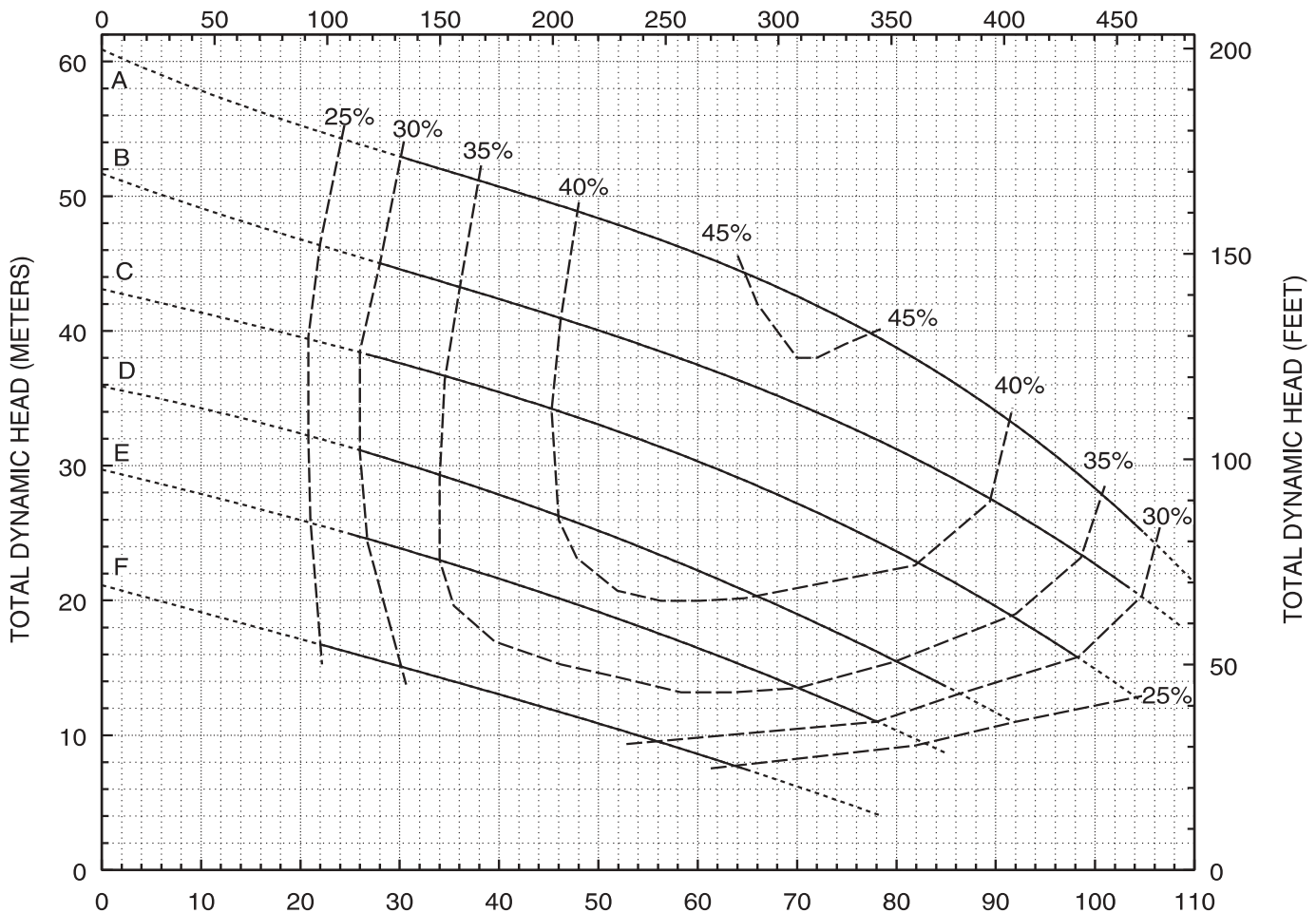
**5-Blade Impeller
3" Discharge**

CURVE	POWER (KW)	SPEED (RPM)	IMPELLER DIAMETER
A	22*	2900	8.00" (203 mm)
B	18.5	2900	7.50" (191 mm)
C	15	2900	7.00" (178 mm)
D	11	2900	6.50" (165 mm)
E	11	2900	6.10" (155 mm)
F	7.5	2900	5.50" (140 mm)

DO NOT OPERATE PUMP IN DOTTED PORTION OF CURVES. CURVES SUBJECT TO CHANGE WITHOUT NOTICE. EFFICIENCIES SHOWN ARE NOMINAL BOWL. GUARANTEED MINIMUM EFFICIENCIES ARE PER H.I. LEVEL B.

* EXCEEDS 22 KW BEYOND 102 M3/HR.

CAPACITY (U.S. GALLONS PER MINUTE)



THIS PERFORMANCE DATA MAY NOT REPRESENT CURRENT DESIGNS. CONTACT VAUGHAN FOR CURRENT DATA.

CAPACITY (CUBIC METERS PER HOUR)

Form V242HP-V3W-2900 11/04



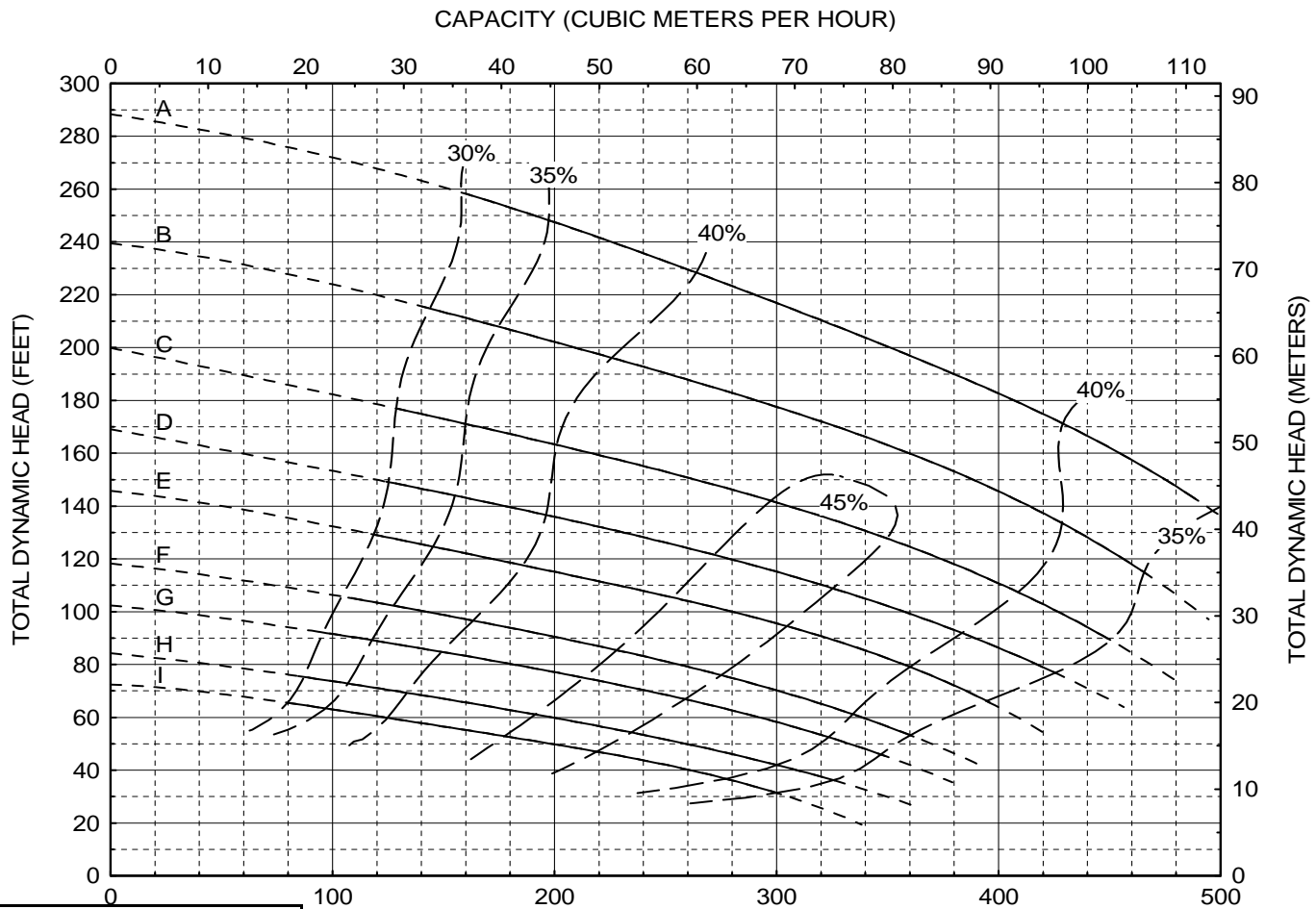
Vaughan Wet Well Chopper Pump PERFORMANCE CURVE

**Model:
V3W**

**5-Blade Impeller
3" Discharge
Variable Speed Curve**

CURVE	POWER (HP)	SPEED (RPM)	IMPELLER DIAMETER
A	50	3510	8.00" (203 mm)
B	40	3200	8.00" (203 mm)
C	30	2900	8.00" (203 mm)
D	25	2700	8.00" (203 mm)
E	20	2500	8.00" (203 mm)
F	15	2250	8.00" (203 mm)
G	15	2100	8.00" (203 mm)
H	10	1900	8.00" (203 mm)
I	7.5	1750	8.00" (203 mm)

DO NOT OPERATE PUMP IN DOTTED PORTION OF CURVES. CURVES SUBJECT TO CHANGE WITHOUT NOTICE. EFFICIENCIES SHOWN ARE NOMINAL BOWL. GUARANTEED MINIMUM EFFICIENCIES ARE PER H.I. LEVEL B.



THIS PERFORMANCE DATA MAY NOT REPRESENT CURRENT DESIGNS. CONTACT VAUGHAN FOR CURRENT DATA.



Vaughan®

Vertical Wet Well 50 Hz Chopper Pump PERFORMANCE CURVE

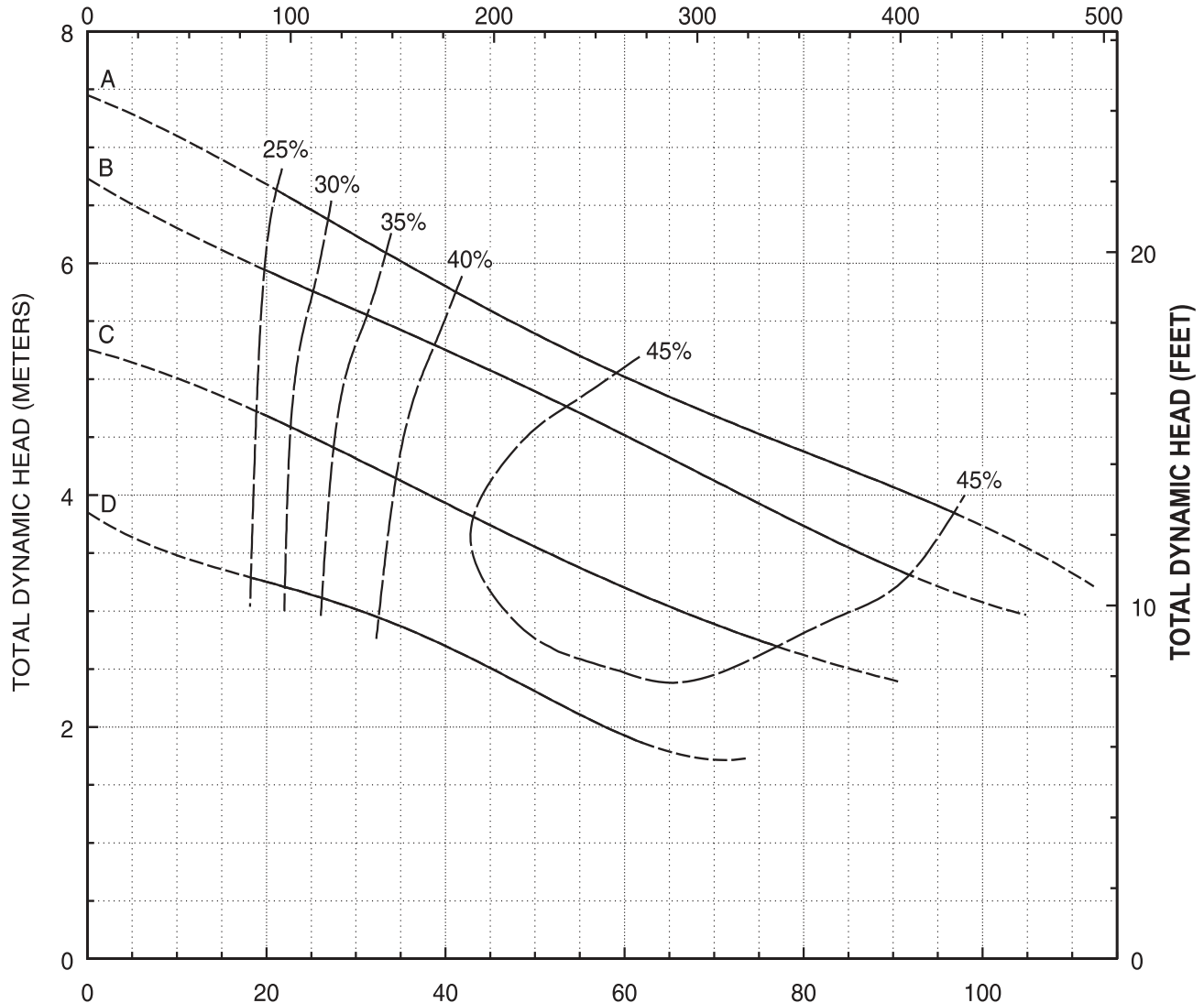
Models:
C4K
V4K

2-Blade Impeller
4" ANSI Discharge

CURVE	POWER (KW)	SPEED (RPM)	IMPELLER DIAMETER
A	4	970	8.90" (226 mm)
B	4	970	8.60" (218 mm)
C	4	970	7.80" (198 mm)
D	4	970	7.00" (178 mm)

DO NOT OPERATE PUMP IN DOTTED PORTION OF CURVES. CURVES SUBJECT TO CHANGE WITHOUT NOTICE. EFFICIENCIES SHOWN ARE NOMINAL BOWL. GUARANTEED MINIMUM EFFICIENCIES ARE PER H.I. LEVEL B.

CAPACITY (GALLONS PER MINUTE)



THIS PERFORMANCE DATA MAY NOT REPRESENT CURRENT DESIGNS. CONTACT VAUGHAN FOR CURRENT DATA.

CAPACITY (CUBIC METERS PER HOUR)

Form V242HP-V4K-970 11/04



Vaughan®

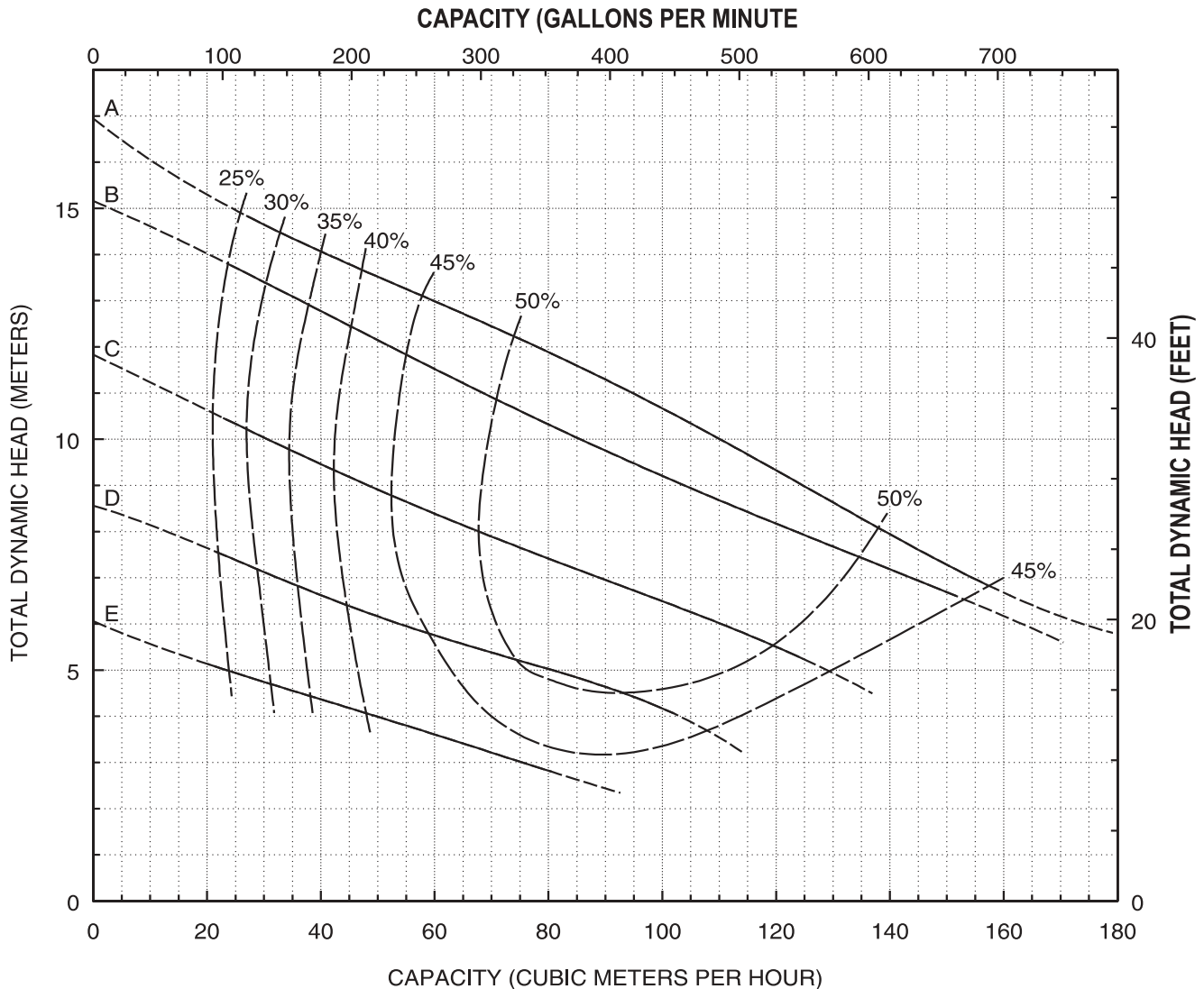
Vertical Wet Well 50 Hz Chopper Pump PERFORMANCE CURVE

**Models:
C4K
V4K**

**2-Blade Impeller
4" ANSI Discharge**

CURVE	POWER (KW)	SPEED (RPM)	IMPELLER DIAMETER
A	7.5	1460	8.90" (226 mm)
B	5.5	1460	8.60" (218 mm)
C	4	1460	7.80" (198 mm)
D	4	1460	7.00" (178 mm)
E	4	1460	6.30" (160 mm)

DO NOT OPERATE PUMP IN DOTTED PORTION OF CURVES. CURVES SUBJECT TO CHANGE WITHOUT NOTICE. EFFICIENCIES SHOWN ARE NOMINAL BOWL. GUARANTEED MINIMUM EFFICIENCIES ARE PER H.I. LEVEL B.



THIS PERFORMANCE DATA MAY NOT REPRESENT CURRENT DESIGNS. CONTACT VAUGHAN FOR CURRENT DATA.

Form V242HP-V4K-1460 11/04



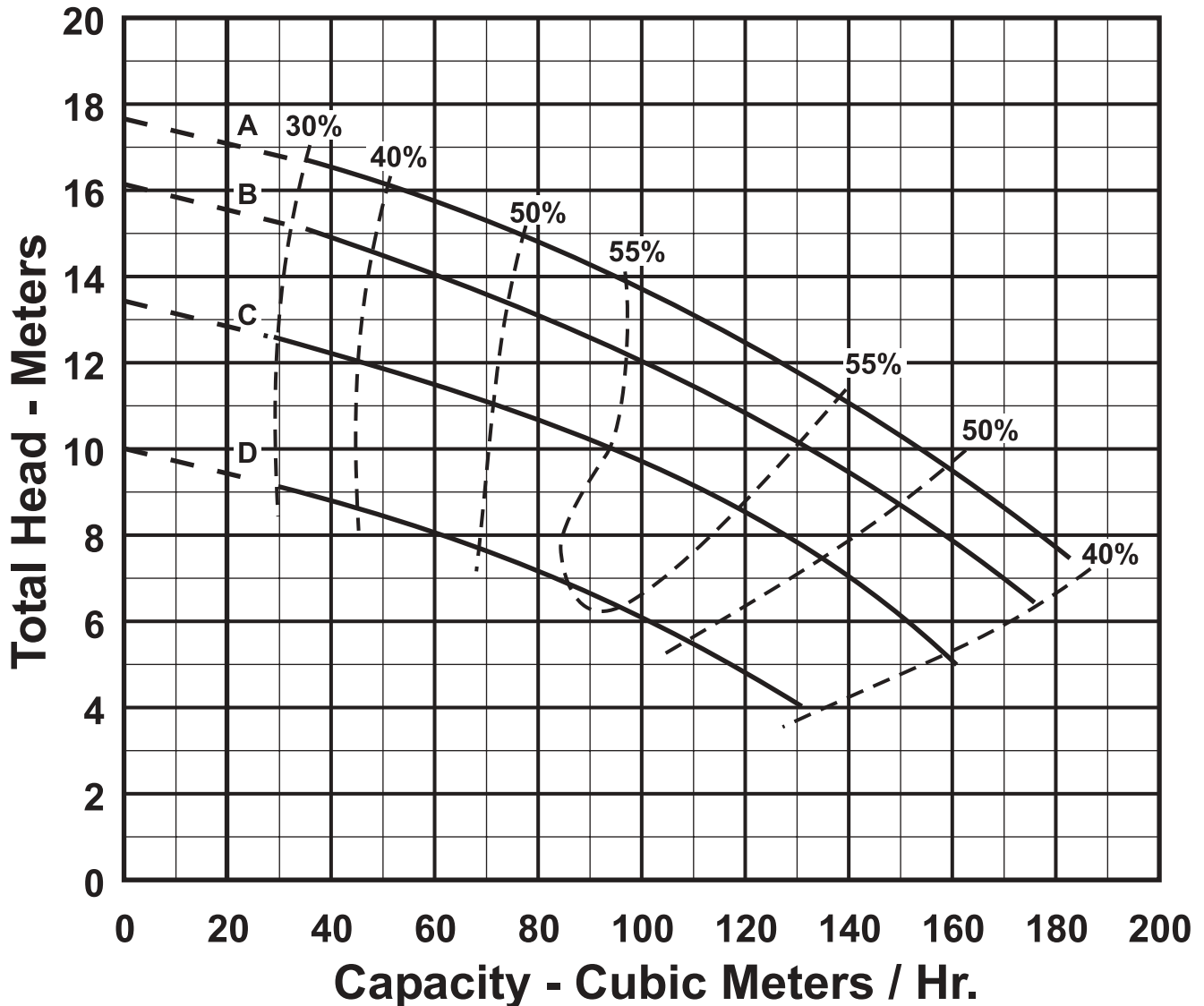
Vertical Wet Well 50 Hz Chopper Pump PERFORMANCE CURVE

Models:
C4L
V4L
S4L

CURVE	POWER (KW)	SPEED (RPM)	IMPELLER DIAMETER
A	9.2	1460	226 mm
B	7.5	1460	218 mm
C	5.5	1460	198 mm
D	4	1460	178 mm

4-Blade Impeller
4" ANSI Discharge

DO NOT OPERATE PUMP IN DOTTED PORTION OF CURVES. CURVES SUBJECT TO CHANGE WITHOUT NOTICE. EFFICIENCIES SHOWN ARE NOMINAL BOWL. GUARANTEED MINIMUM EFFICIENCIES ARE PER H.I. LEVEL B.



THIS PERFORMANCE DATA MAY NOT REPRESENT CURRENT DESIGNS. CONTACT VAUGHAN FOR CURRENT DATA.



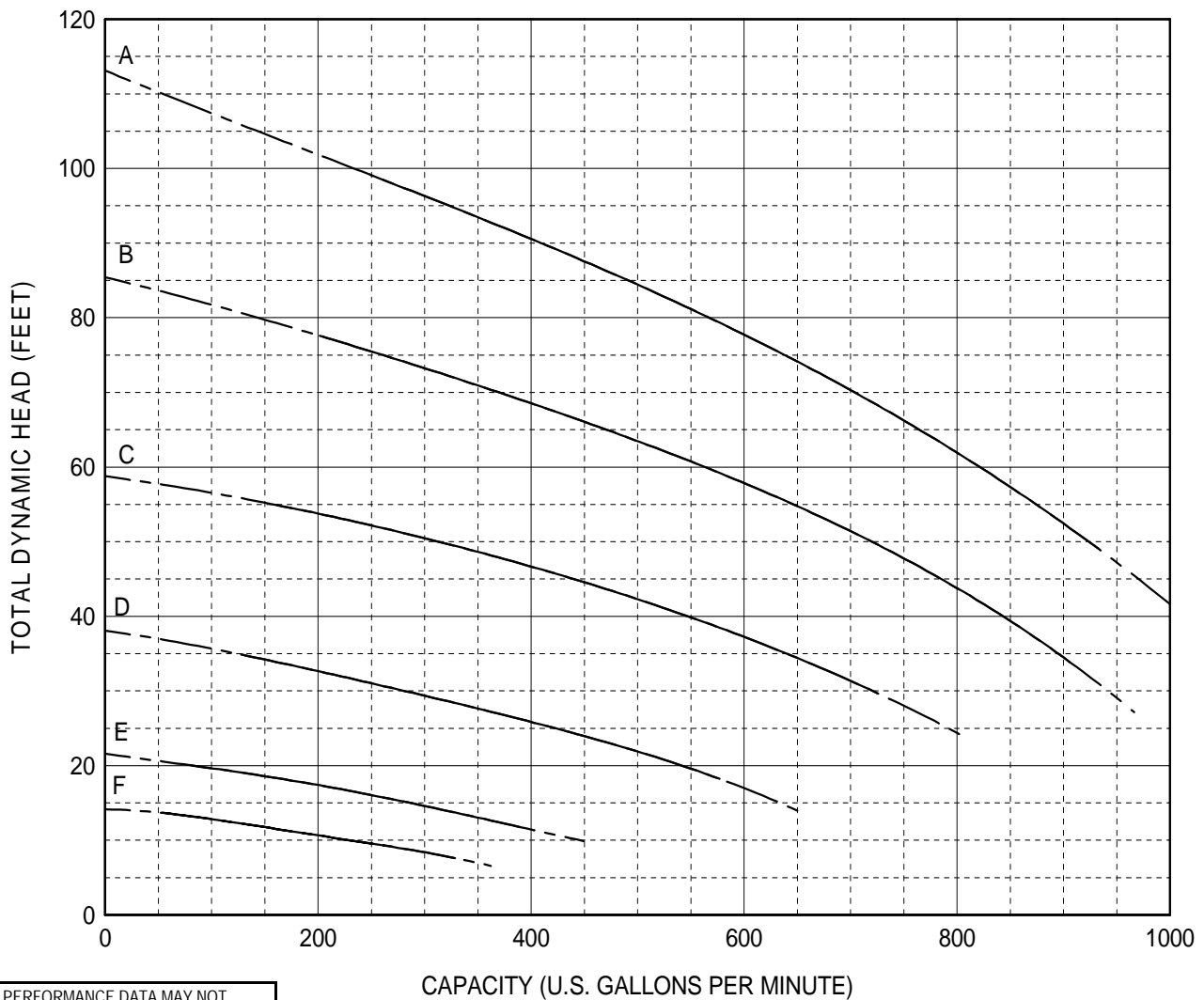
Vertical Wet Well Chopper Pump PERFORMANCE CURVE

Models:
C4L
V4L

4-Blade Impeller
4" Discharge
Variable Speed Curve

CURVE	POWER (HP/KW)	SPEED (RPM)	IMPELLER DIAMETER
A	30 / 22	2000	8.90" (226 mm)
B	20 / 15	1750	8.90" (226 mm)
C	15 / 11	1460	8.90" (226 mm)
D	7.5 / 5.5	1170	8.90" (226 mm)
E	5 / 4	870	8.90" (226 mm)
F	5 / 4	700	8.90" (226 mm)

DO NOT OPERATE PUMP IN DOTTED PORTION OF CURVES. CURVES SUBJECT TO CHANGE WITHOUT NOTICE. EFFICIENCIES SHOWN ARE NOMINAL BOWL. GUARANTEED MINIMUM EFFICIENCIES ARE PER H.I. LEVEL B.



THIS PERFORMANCE DATA MAY NOT REPRESENT CURRENT DESIGNS. CONTACT VAUGHAN FOR CURRENT DATA.



Vaughan

Vertical Wet Well 50 Hz Chopper Pump PERFORMANCE CURVE

Models:

C4P

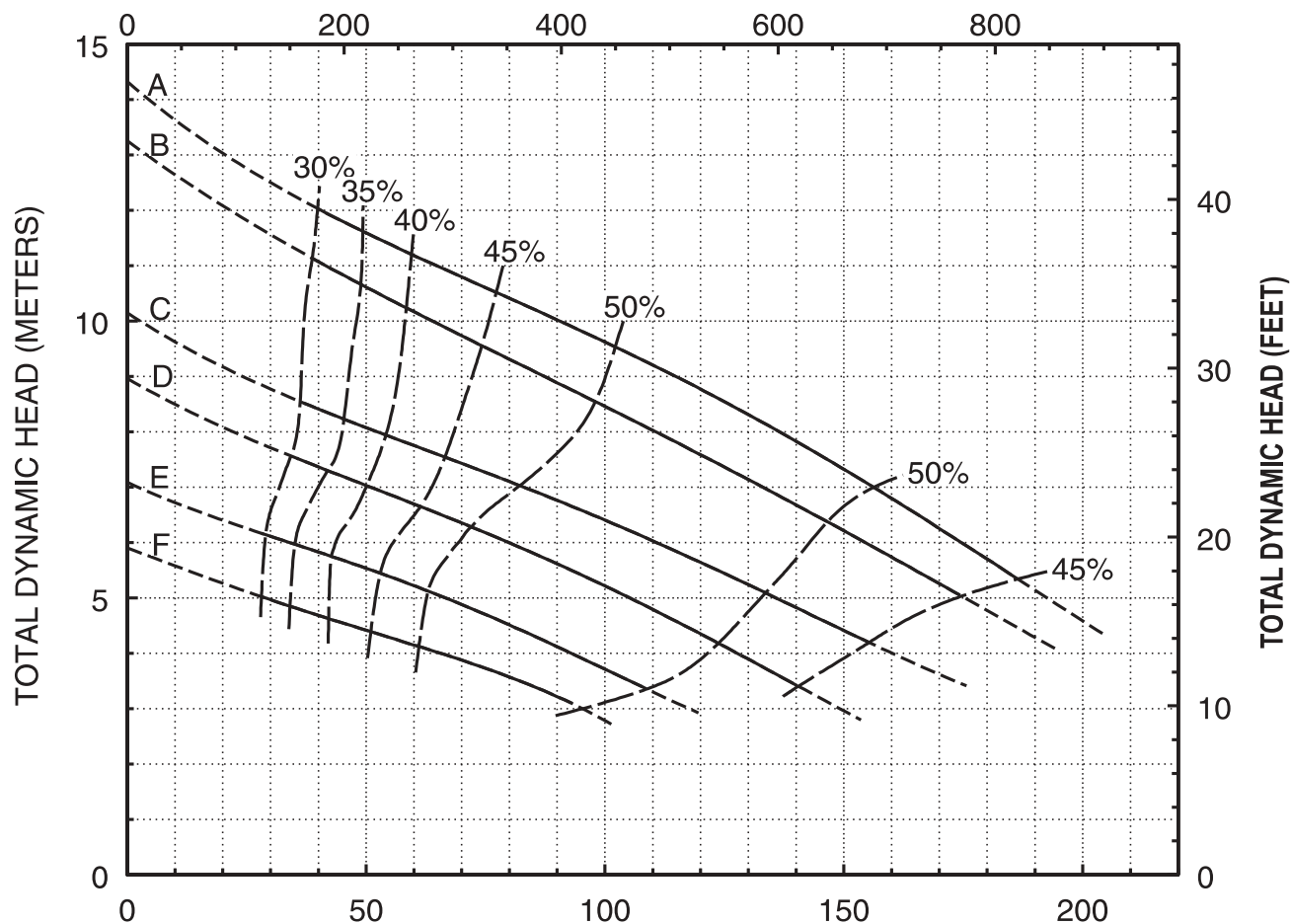
V4P

**3-Blade Impeller
4" ANSI Discharge**

CURVE	POWER (KW)	SPEED (RPM)	IMPELLER DIAMETER
A	7.5	970	11.80" (298 mm)
B	5.5	970	11.40" (290 mm)
C	5.5	970	10.60" (269 mm)
D	5.5	970	10.00" (254 mm)
E	5.5	970	9.10" (231 mm)
F	5.5	970	8.50" (216 mm)

DO NOT OPERATE PUMP IN DOTTED PORTION OF CURVES. CURVES SUBJECT TO CHANGE WITHOUT NOTICE. EFFICIENCIES SHOWN ARE NOMINAL BOWL. GUARANTEED MINIMUM EFFICIENCIES ARE PER H.I. LEVEL B.

CAPACITY (GALLONS PER MINUTE)



CAPACITY (CUBIC METERS PER HOUR)

THIS PERFORMANCE DATA MAY NOT REPRESENT CURRENT DESIGNS. CONTACT VAUGHAN FOR CURRENT DATA.

Form V242HP-V4P-970 11/04



Vertical Wet Well 50 Hz Chopper Pump PERFORMANCE CURVE

Models:
C4P
V4P

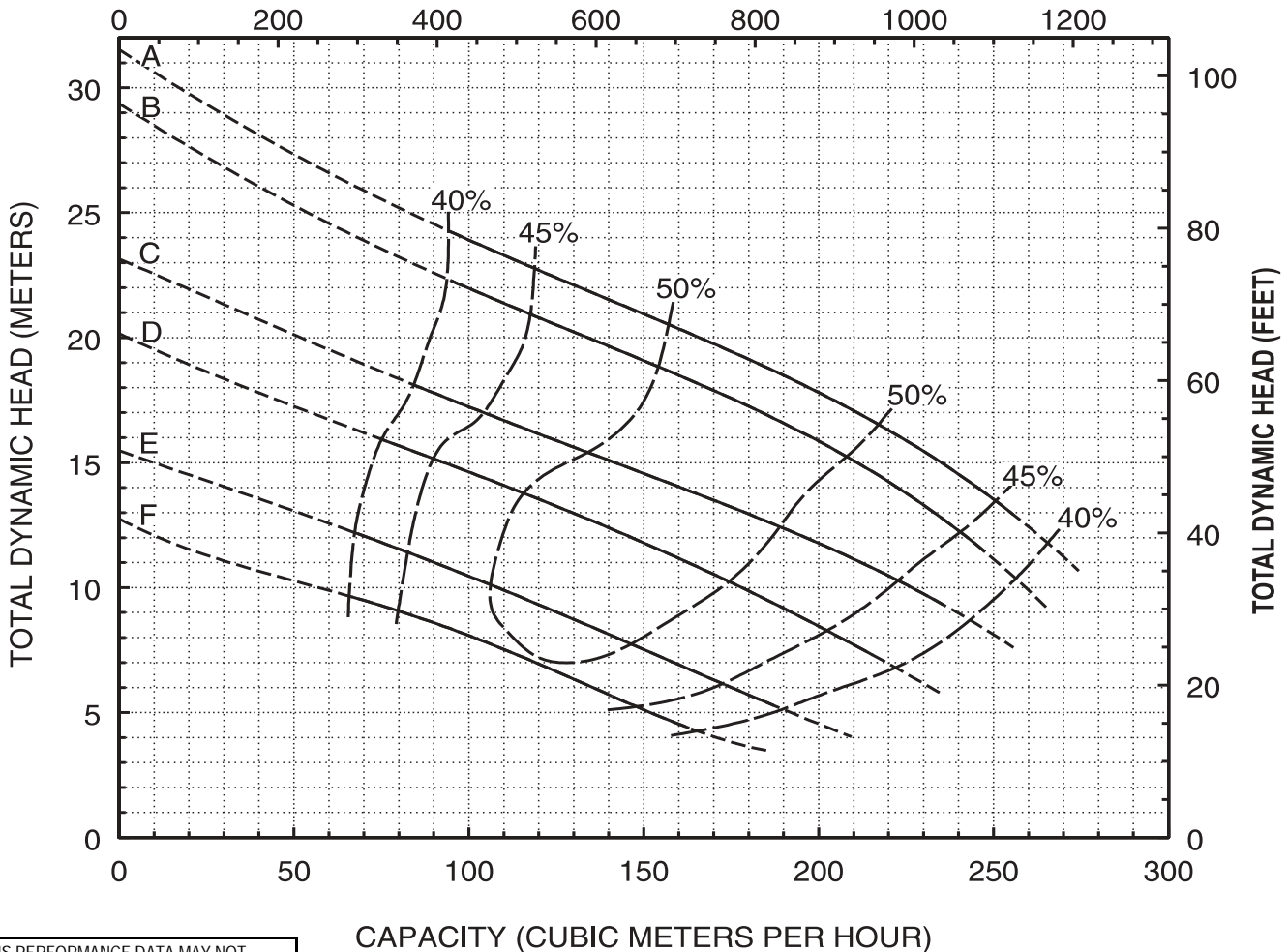
3-Blade Impeller
4" ANSI Discharge

CURVE	POWER (KW)	SPEED (RPM)	IMPELLER DIAMETER
A	22	1460	11.80" (298 mm)
B	18.5	1460	11.40" (290 mm)
C	15	1460	10.60" (269 mm)
D	11	1460	10.00" (254 mm)
F	7.5*	1460	9.10" (231 mm)
G	5.5**	1460	8.50" (216 mm)

DO NOT OPERATE PUMP IN DOTTED PORTION OF CURVES. CURVES SUBJECT TO CHANGE WITHOUT NOTICE. EFFICIENCIES SHOWN ARE NOMINAL BOWL. GUARANTEED MINIMUM EFFICIENCIES ARE PER H.I. LEVEL B.

*EXCEEDS 7.5 KW BEYOND 175 M³/HR. **EXCEEDS 5.5 KW BEYOND 160 M³/HR.

CAPACITY (GALLONS PER MINUTE)



THIS PERFORMANCE DATA MAY NOT REPRESENT CURRENT DESIGNS. CONTACT VAUGHAN FOR CURRENT DATA.



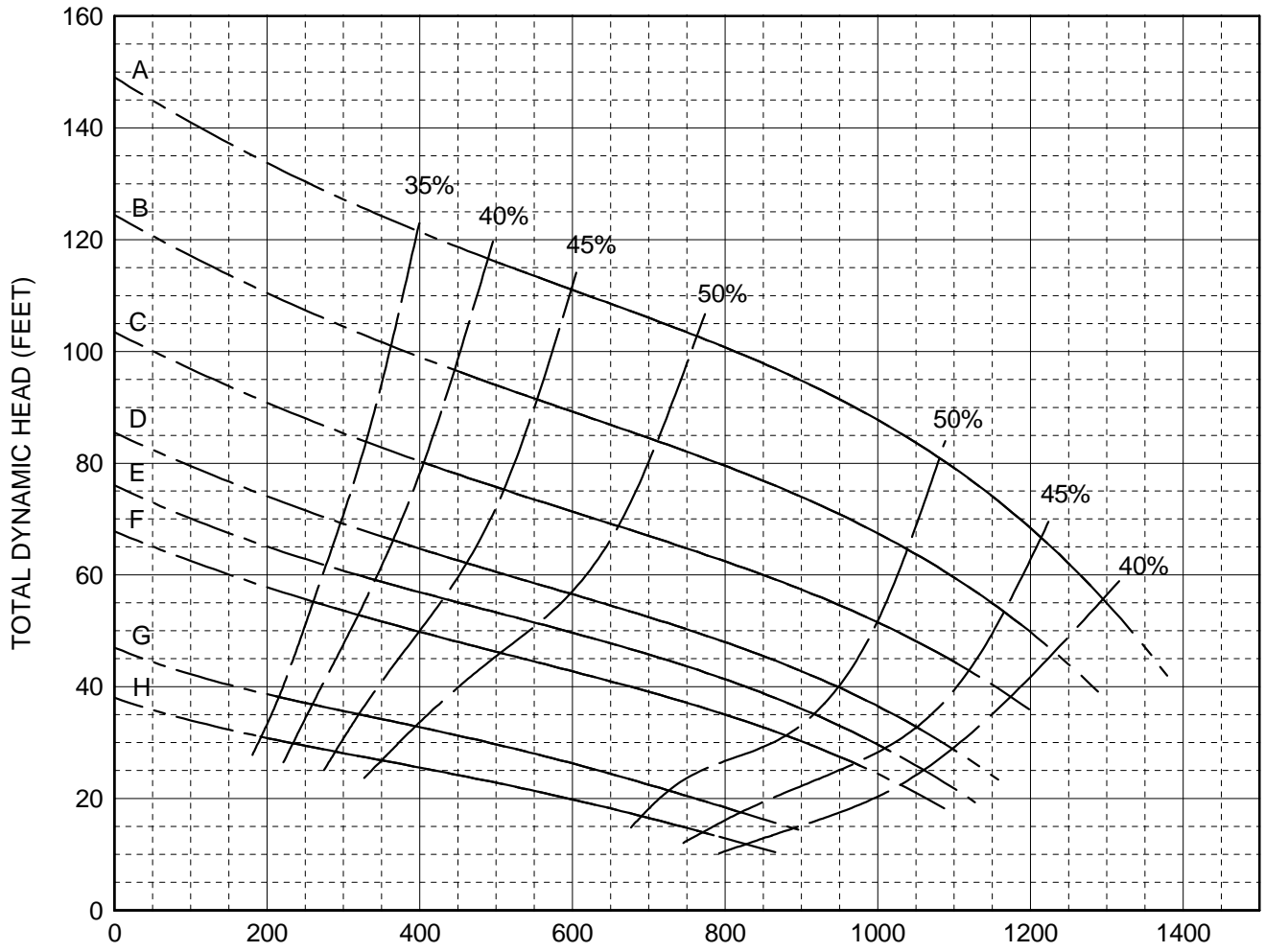
Vertical Wet Well Chopper Pump PERFORMANCE CURVE

Models:
C4P
V4P

3-Blade Impeller
4" Discharge
Variable Speed Curve

CURVE	POWER (HP/KW)	SPEED (RPM)	IMPELLER DIAMETER
A	50 / 37	1750	11.80" (298 mm)
B	40 / 30	1600	11.80" (298 mm)
C	30 / 22	1460	11.80" (298 mm)
D	25 / 18.5	1320	11.80" (298 mm)
E	20 / 15	1240	11.80" (298 mm)
F	15 / 11	1170	11.80" (298 mm)
G	10 / 7.5	970	11.80" (298 mm)
H	7.5 / 5.5	870	11.80" (298 mm)

DO NOT OPERATE PUMP IN DOTTED PORTION OF CURVES. CURVES SUBJECT TO CHANGE WITHOUT NOTICE. EFFICIENCIES SHOWN ARE NOMINAL BOWL. GUARANTEED MINIMUM EFFICIENCIES ARE PER H.I. LEVEL B.



THIS PERFORMANCE DATA MAY NOT REPRESENT CURRENT DESIGNS. CONTACT VAUGHAN FOR CURRENT DATA.



Vertical Wet Well 50 Hz Chopper Pump PERFORMANCE CURVE

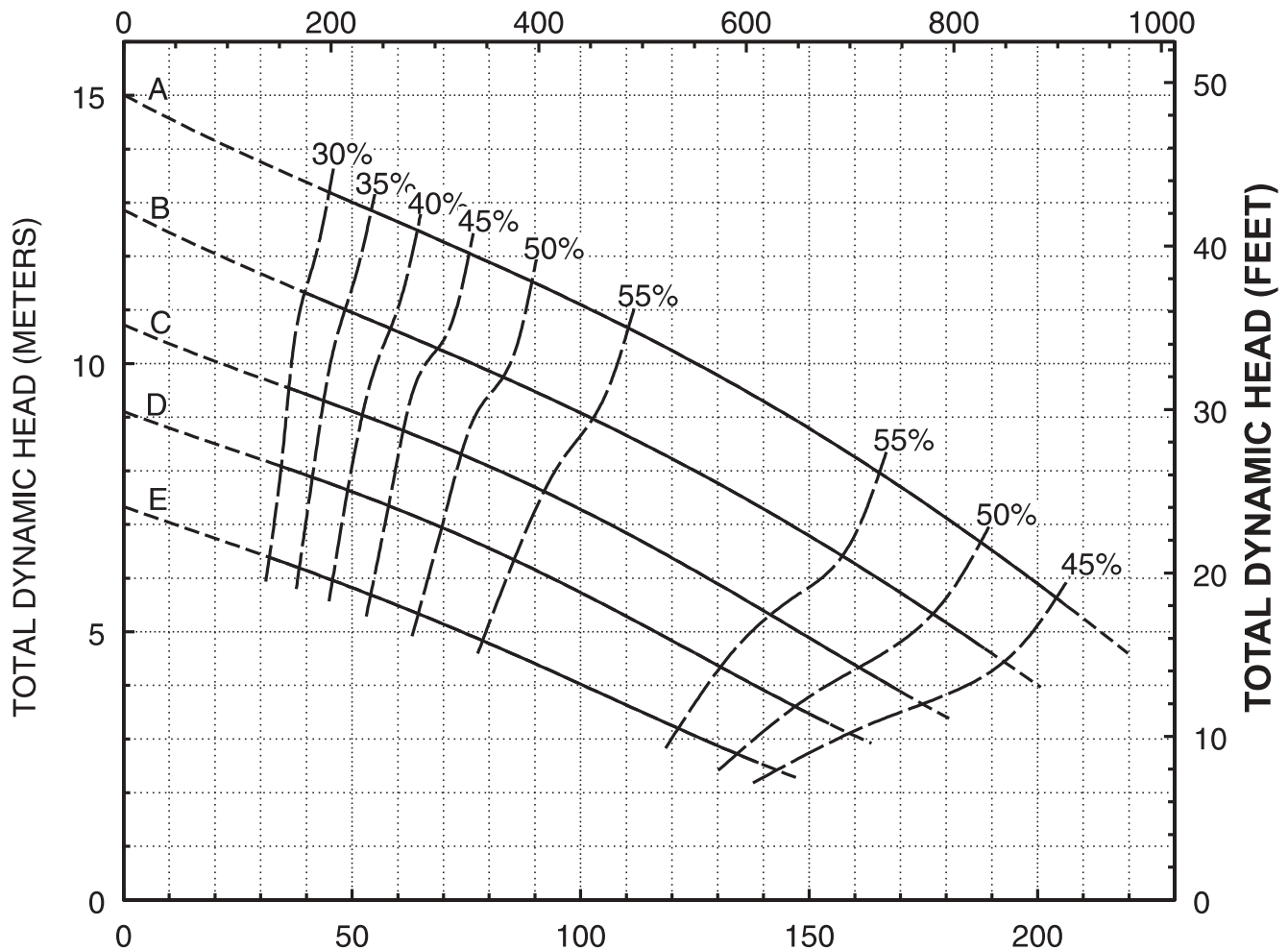
Models:
C4R
V4R

6-Blade Impeller
4" ANSI Discharge

CURVE	POWER (KW)	SPEED (RPM)	IMPELLER DIAMETER
A	7.5	970	11.80" (298 mm)
B	5.5	970	11.00" (280 mm)
C	5.5	970	10.30" (262 mm)
D	5.5	970	9.70" (246 mm)
E	5.5	970	8.90" (226 mm)

DO NOT OPERATE PUMP IN DOTTED PORTION OF CURVES. CURVES SUBJECT TO CHANGE WITHOUT NOTICE. EFFICIENCIES SHOWN ARE NOMINAL BOWL. GUARANTEED MINIMUM EFFICIENCIES ARE PER H.I. LEVEL B.

CAPACITY (GALLONS PER MINUTE)



THIS PERFORMANCE DATA MAY NOT REPRESENT CURRENT DESIGNS. CONTACT VAUGHAN FOR CURRENT DATA.

CAPACITY (CUBIC METERS PER HOUR)

Form V242HP-V4R-970 11/04



Vertical Wet Well 50 Hz Chopper Pump PERFORMANCE CURVE

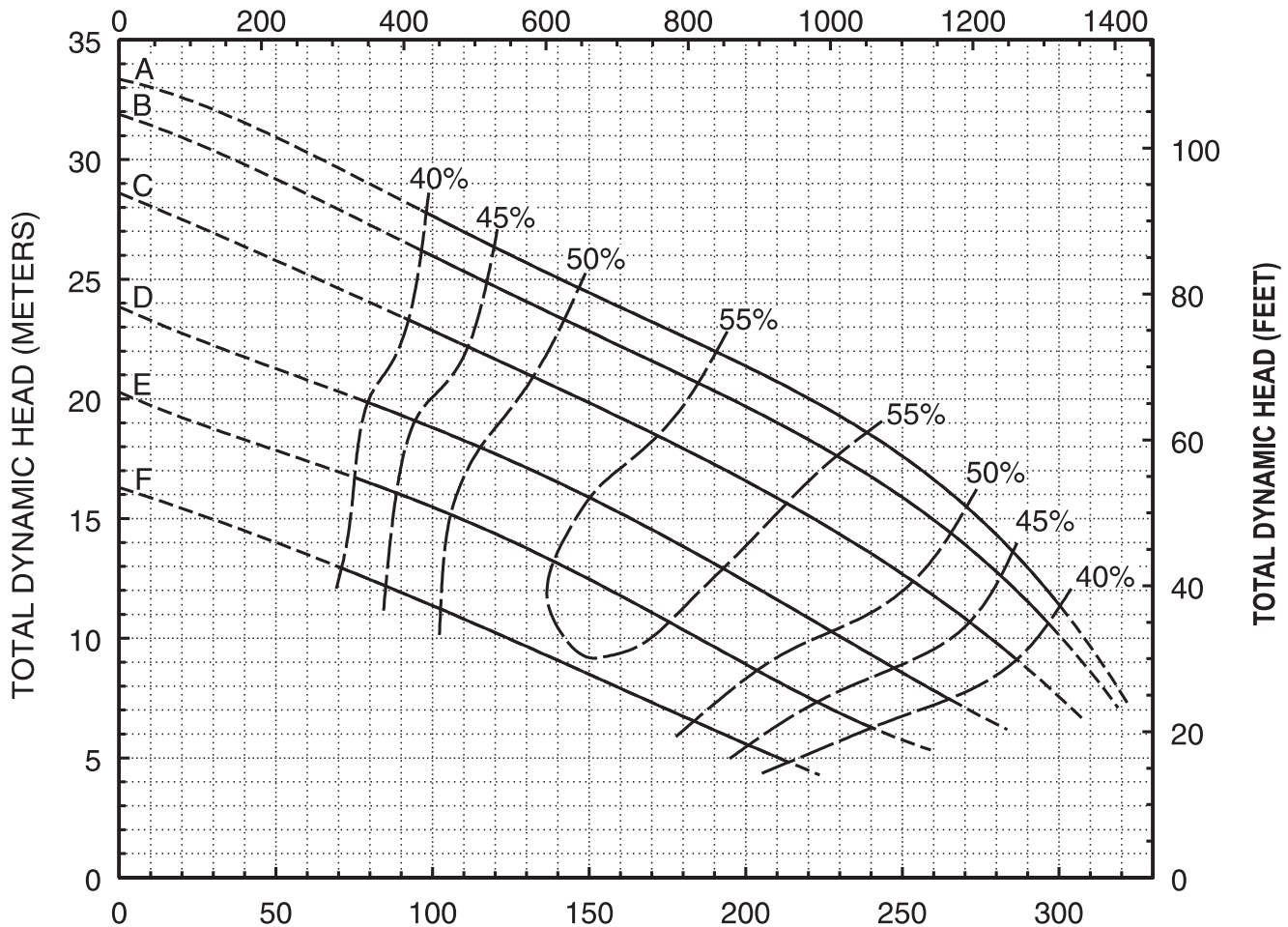
**Models:
C4R
V4R**

**6-Blade Impeller
4" ANSI Discharge**

CURVE	POWER (KW)	SPEED (RPM)	IMPELLER DIAMETER
A	30	1460	11.80" (298 mm)
B	22	1460	11.50" (292 mm)
C	18.5	1460	11.00" (279 mm)
D	15	1460	10.30" (262 mm)
E	11	1460	9.70" (246 mm)
F	7.5	1460	8.90" (226 mm)

DO NOT OPERATE PUMP IN DOTTED PORTION OF CURVES. CURVES SUBJECT TO CHANGE WITHOUT NOTICE. EFFICIENCIES SHOWN ARE NOMINAL BOWL. GUARANTEED MINIMUM EFFICIENCIES ARE PER H.I. LEVEL B.

CAPACITY (GALLONS PER MINUTE)



THIS PERFORMANCE DATA MAY NOT REPRESENT CURRENT DESIGNS. CONTACT VAUGHAN FOR CURRENT DATA.

CAPACITY (CUBIC METERS PER HOUR)



Vaughan®

Vertical Recirculator 50 Hz Chopper Pump PERFORMANCE CURVE

Models:

4900*

5200

5300

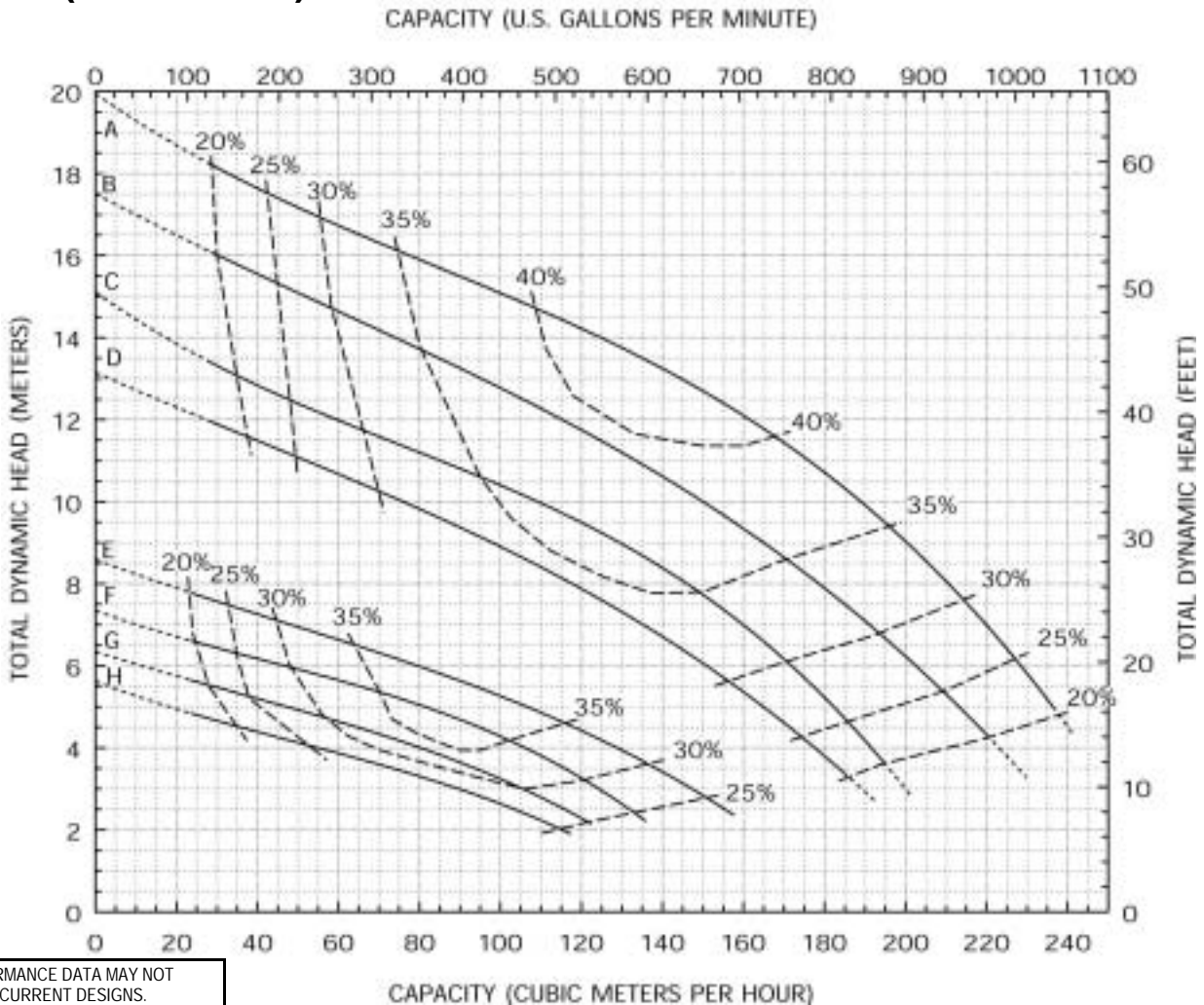
V4MR*

**2-Blade Impeller
5" ANSI Discharge
(5200/5300)**

**4" ANSI Discharge
(4900/V4MR)**

CURVE	POWER (KW)	SPEED (RPM)	IMPELLER DIAMETER
A	18.5	1460	(10.00") 254mm
B	15	1460	(9.50") 241mm
C	11	1460	(9.00") 229mm
D	11	1460	(8.60") 218mm
E	5.5	970	(10.00") 254mm
F	5.5	970	(9.50") 241mm
G	4	970	(9.00") 229mm
H	4	970	(8.60") 218mm

DO NOT OPERATE PUMP IN DOTTED PORTION OF CURVES. CURVES SUBJECT TO CHANGE WITHOUT NOTICE. EFFICIENCIES SHOWN ARE NOMINAL BOWL. GUARANTEED MINIMUM EFFICIENCIES ARE PER H.I. LEVEL B.



THIS PERFORMANCE DATA MAY NOT REPRESENT CURRENT DESIGNS. CONTACT VAUGHAN FOR CURRENT DATA.



Vaughan

E Series Vertical 50 Hz Chopper Pump PERFORMANCE CURVE

Models:

C6U (max 4' long)

V6U

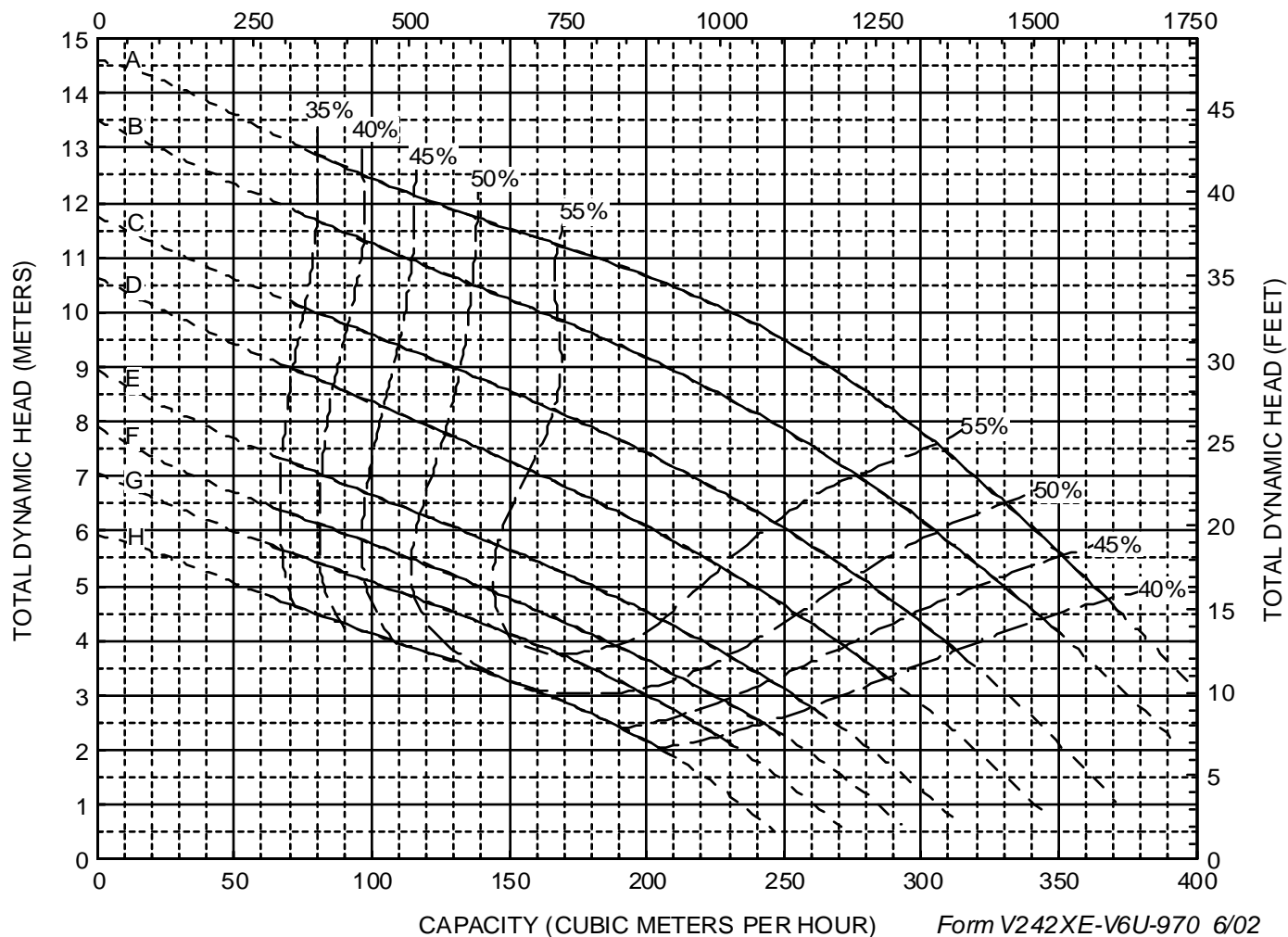
V6UR

**4 Blade Impeller
6" Discharge
Tangential Casing**

CURVE	POWER (KW)	SPEED (RPM)	IMPELLER DIAMETER
A	15*	970	11.80" (298 mm)
B	11	970	11.50" (292 mm)
C	11*	970	10.90" (277 mm)
D	7.5	970	10.40" (264 mm)
E	5.5	970	9.75" (248 mm)
F	5.5	970	9.40" (239 mm)
G	4	970	9.10" (231 mm)
H	4	970	8.70" (221 mm)

DO NOT OPERATE PUMP IN DOTTED PORTION OF CURVES. CURVES SUBJECT TO CHANGE WITHOUT NOTICE. EFFICIENCIES SHOWN ARE NOMINAL. GUARANTIED MINIMUM EFFICIENCIES PER H.I. LEVEL B.
*EXCEEDS 11 KW BEYOND 300 M³/HR. **EXCEEDS 7.5 KW BEYOND 230 M³/HR.

CAPACITY (U.S. GALLONS PER MINUTE)



CAPACITY (CUBIC METERS PER HOUR)

Form V242XE-V6U-970 6/02



Vaughan

E Series Vertical 50 Hz Chopper Pump PERFORMANCE CURVE

Models:

C6U (max 3' long)

V6U

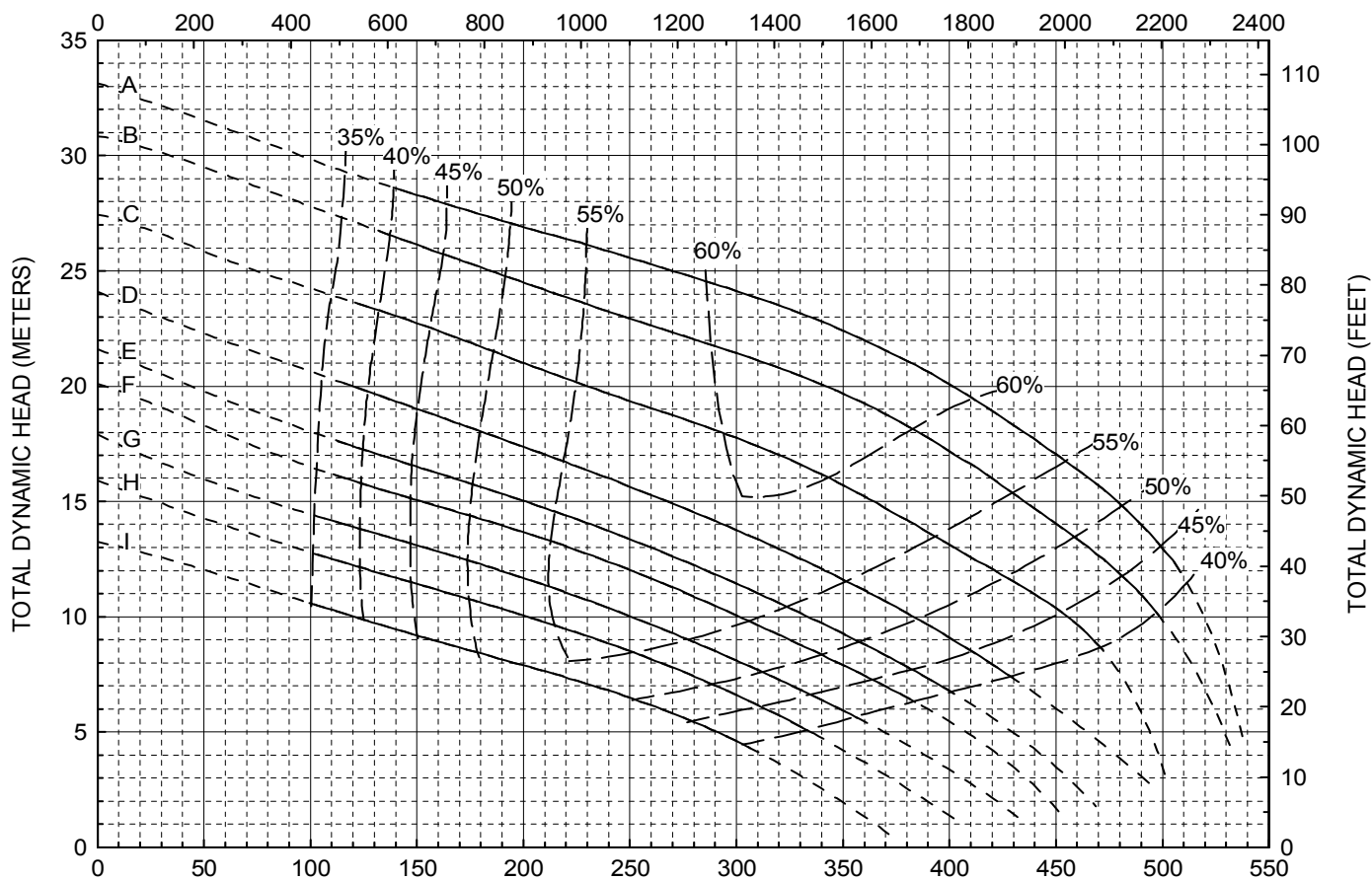
V6UR

**4 Blade Impeller
6" Discharge
Tangential Casing**

CURVE	POWER (KW)	SPEED (RPM)	IMPELLER DIAMETER
A	45*	1460	11.75" (298 mm)
B	37	1460	11.50" (292 mm)
C	30	1460	10.90" (277 mm)
D	30**	1460	10.40" (264 mm)
E	22	1460	10.00" (254 mm)
F	18.5***	1460	9.75" (248 mm)
G	15	1460	9.40" (239 mm)
H	15****	1460	9.10" (231 mm)
I	11	1460	8.70" (221 mm)

DO NOT OPERATE PUMP IN DOTTED PORTION OF CURVES. CURVES SUBJECT TO CHANGE WITHOUT NOTICE. EFFICIENCIES SHOWN ARE NOMINAL. GUARANTIED MINIMUM EFFICIENCIES PER H.I. LEVEL B.
*EXCEEDS 37 KW BEYOND 425 M³/HR. **EXCEEDS 22 KW BEYOND 425 M³/HR. ***EXCEEDS 15 KW BEYOND 310 M³/HR.
****EXCEEDS 11 KW BEYOND 275 M³/HR.

CAPACITY (U.S. GALLONS PER MINUTE)



CAPACITY (CUBIC METERS PER HOUR)

Form V242XE-V6U-1460 12/01



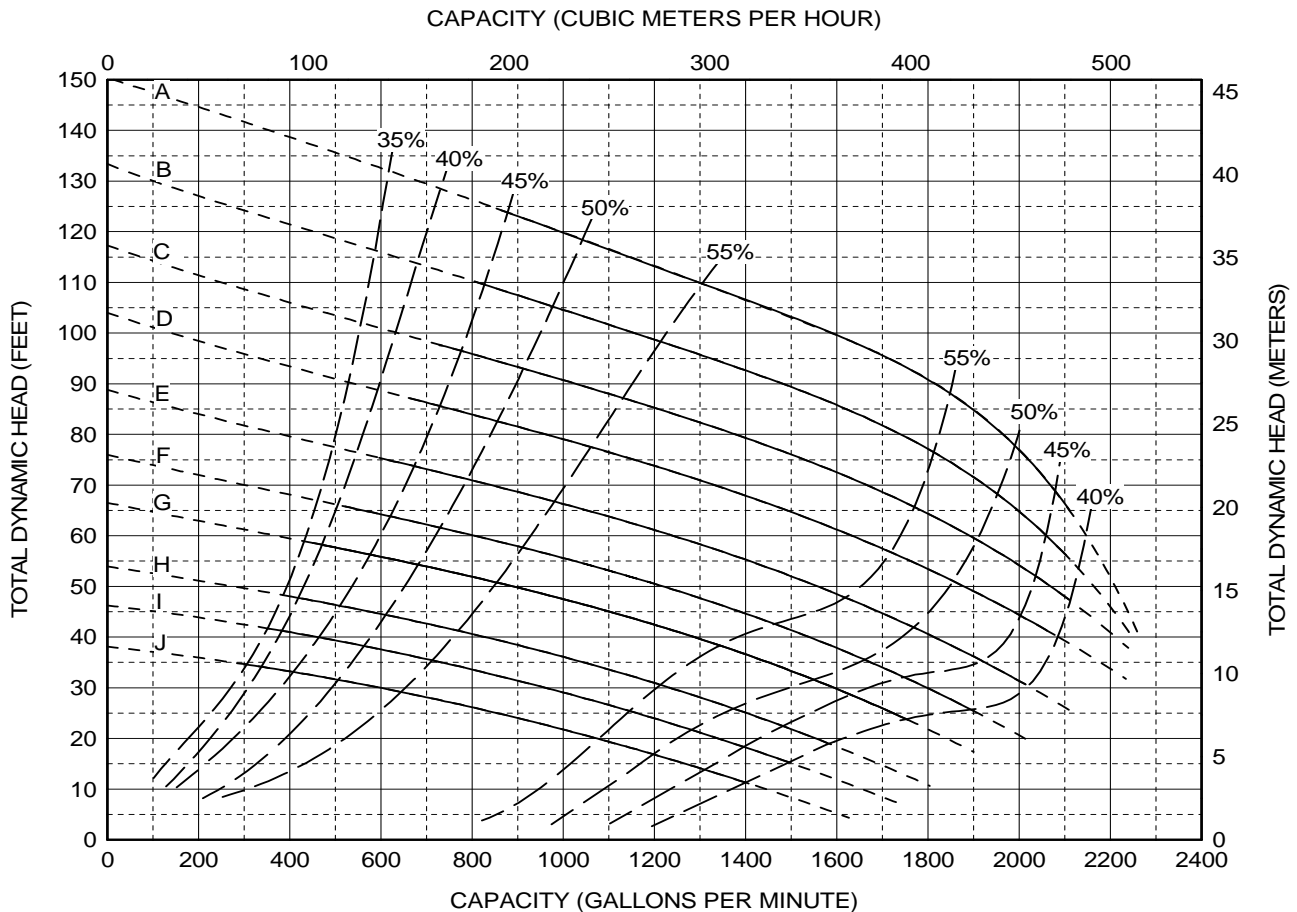
Vertical Wet Well Chopper Pump PERFORMANCE CURVE

Models:
C6U
V6U

4-Blade Impeller
6" Discharge
Variable Speed Curve

CURVE	POWER (HP/KW)	SPEED (RPM)	IMPELLER DIAMETER
A	100/75	1750	11.80" (298 mm)
B	75/55	1650	11.80" (298 mm)
C	75/55	1550	11.80" (298 mm)
D	50/37*	1460	11.80" (298 mm)
E	40/30	1350	11.80" (298 mm)
F	40/30	1250	11.80" (298 mm)
G	30/22	1170	11.80" (298 mm)
H	20/15	1050	11.80" (298 mm)
I	15/11	970	11.80" (298 mm)
J	15/11	870	11.80" (298 mm)

DO NOT OPERATE PUMP IN DOTTED PORTION OF CURVES. CURVES SUBJECT TO CHANGE WITHOUT NOTICE. EFFICIENCIES SHOWN ARE NOMINAL BOWL. GUARANTEED MINIMUM EFFICIENCIES ARE PER H.I. LEVEL B.
* EXCEEDS 50 HP BEYOND 2000 GPM.



THIS PERFORMANCE DATA MAY NOT REPRESENT CURRENT DESIGNS. CONTACT VAUGHAN FOR CURRENT DATA.



Vaughan®

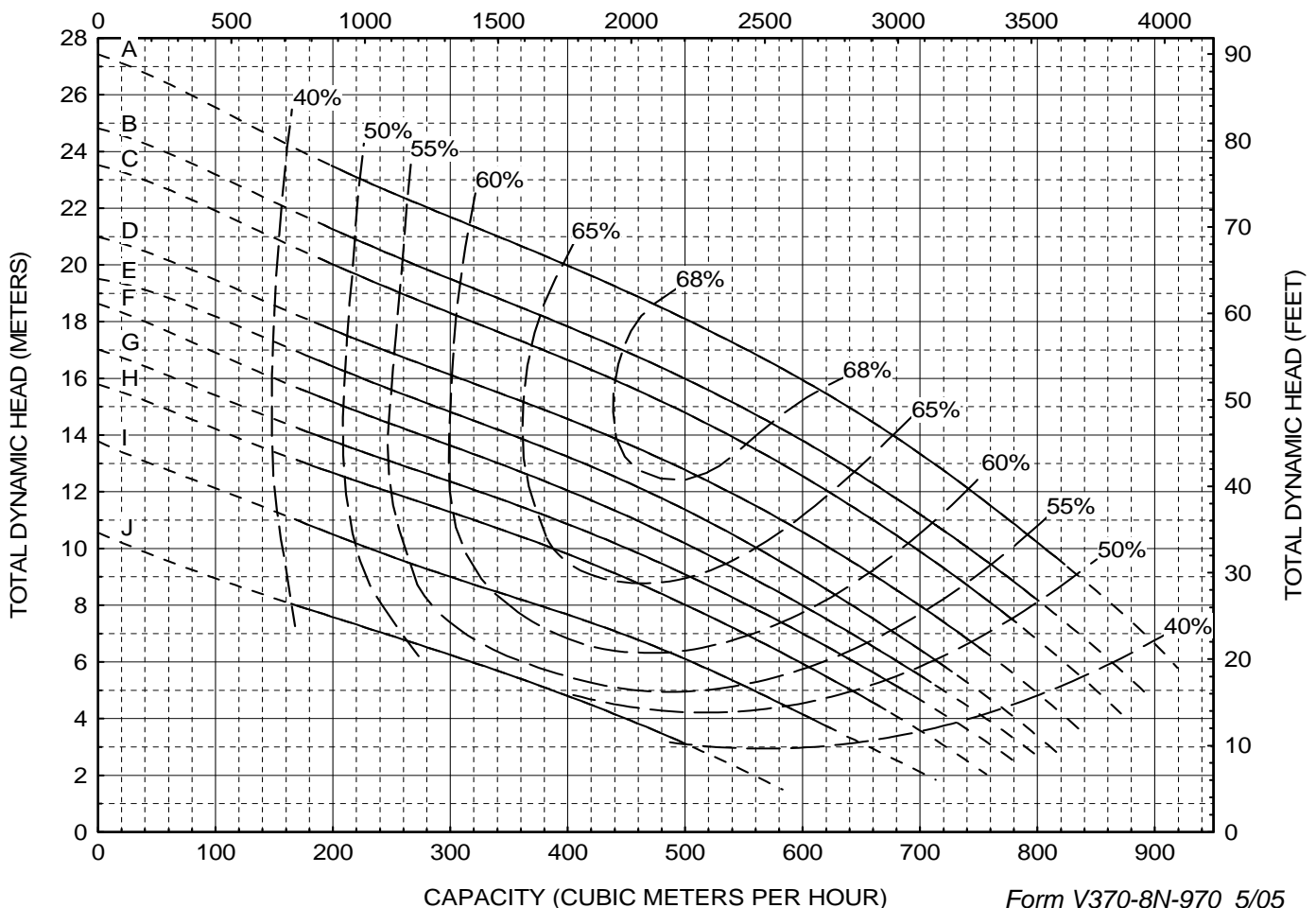
Vaughan E Series 50 Hz Chopper Pump PERFORMANCE CURVE

Models:
HE8N10
PE8N10
SE8N
V8N

Back-Pull-Out Casing
3-Blade Impeller
8" ANSI Discharge
10" ANSI Suction

CURVE	POWER (KW/HP)	SPEED (RPM)	IMPELLER DIAMETER
A	45 / 60	970	16.00" (406 mm)
B	37 / 50	970	15.30" (389 mm)
C	37 / 50	970	15.00" (381 mm)
D	30 / 40	970	14.40" (366 mm)
E	30 / 40	970	14.00" (356 mm)
F	22 / 30	970	13.50" (343 mm)
G	22 / 30	970	13.00" (330 mm)
H	18.5 / 25	970	12.60" (320 mm)
I	15 / 20	970	12.00" (305 mm)
J	11 / 15	970	10.90" (277 mm)

DO NOT OPERATE PUMP IN DOTTED PORTION OF CURVES. CURVES SUBJECT TO CHANGE WITHOUT NOTICE. EFFICIENCIES SHOWN ARE NOMINAL BOWL. GUARANTIED MINIMUM EFFICIENCIES PER H.I. LEVEL B. CAPACITY (U.S. GALLONS PER MINUTE)





Vaughan E Series Chopper Pump PERFORMANCE CURVE

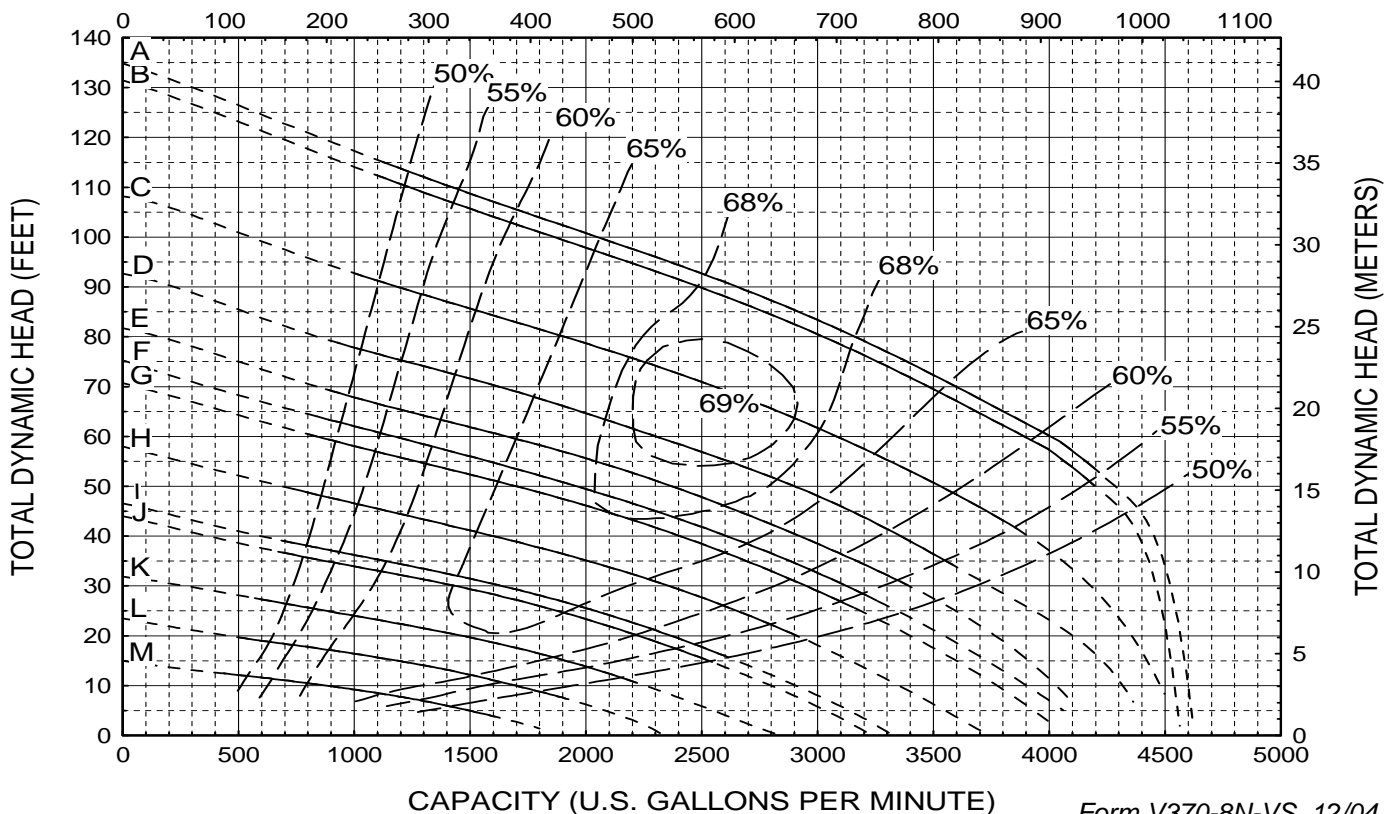
**Models:
HE8N10
PE8N10
SE8N
V8N**

**Back-Pull-Out Casing
3-Blade Impeller
8" Discharge
10" Suction
Variable Speed Curve**

CURVE	POWER (HP/KW)	SPEED (RPM)	IMPELLER DIAMETER
A	125 / 90*	1185	16.00" (406 mm)
B	100 / 75	1170	16.00" (406 mm)
C	75 / 55	1065	16.00" (406 mm)
D	60 / 45	985	16.00" (406 mm)
E	50 / 37	925	16.00" (406 mm)
F	50 / 37	885	16.00" (406 mm)
G	40 / 30	860	16.00" (406 mm)
H	30 / 22	780	16.00" (406 mm)
I	25 / 18.5	700	16.00" (406 mm)
J	20 / 15	680	16.00" (406 mm)
K	15 / 11	585	16.00" (406 mm)
L	15 / 11**	500	16.00" (406 mm)
M	10 / 7.5**	400	16.00" (406 mm)

DO NOT OPERATE PUMP IN DOTTED PORTION OF CURVES. CURVES SUBJECT TO CHANGE WITHOUT NOTICE. EFFICIENCIES SHOWN ARE NOMINAL. GUARANTIED MINIMUM EFFICIENCIES PER H.I. LEVEL B. *EXCEEDS 100 HP BEYOND 3900 GPM **MOTORS INCREASED BY ONE SIZE FOR EXTRA CHOPPING TORQUE.

CAPACITY (CUBIC METERS PER HOUR)



CAPACITY (U.S. GALLONS PER MINUTE)



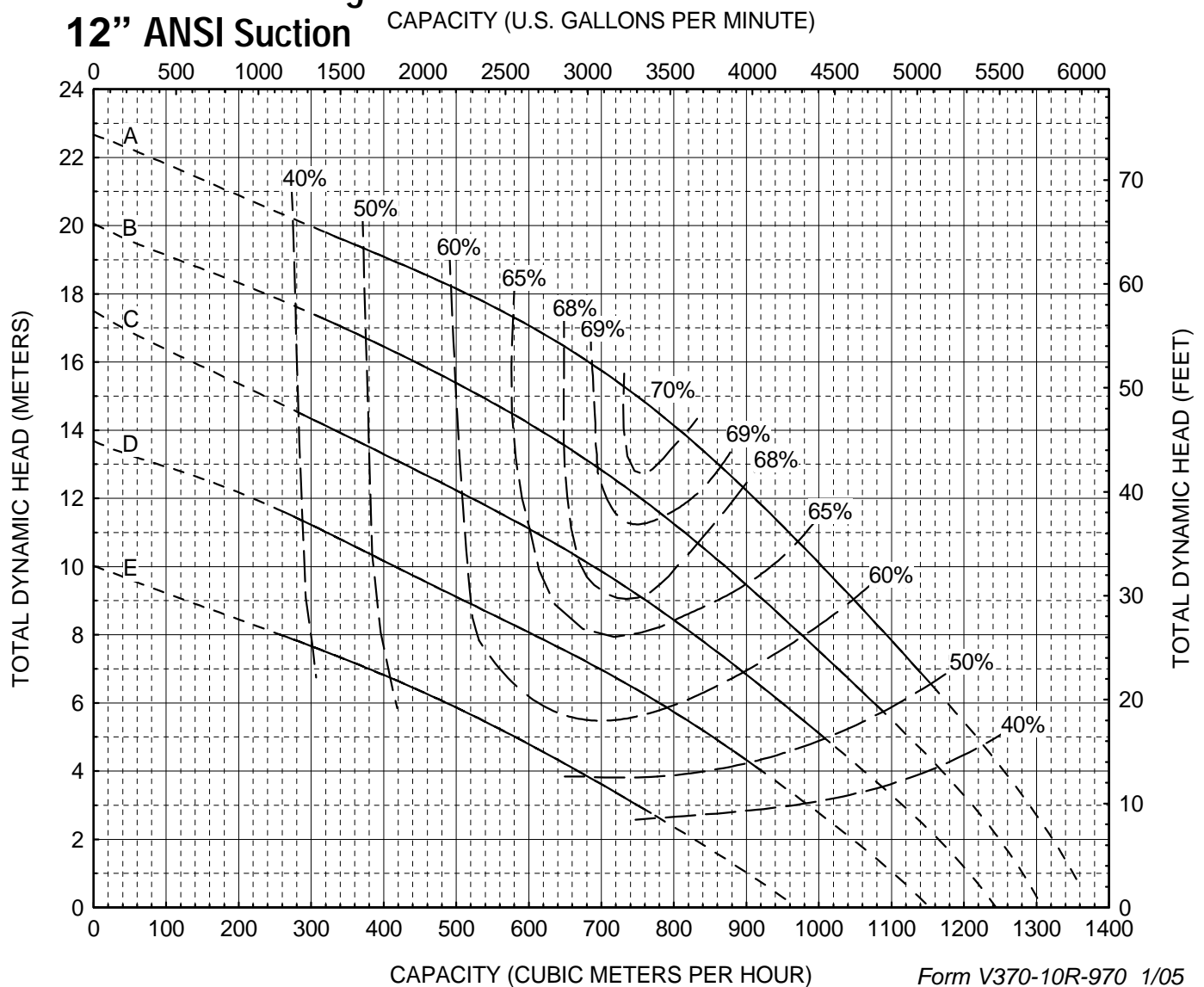
Vaughan E Series 50 Hz Chopper Pump PERFORMANCE CURVE

Models:
HE10R12
PE10R12
SE10R
V10R

CURVE	POWER (KW)	SPEED (RPM)	IMPELLER DIAMETER
A	45	970	16.00" (406 mm)
B	37	970	15.00" (381 mm)
C	30	970	14.00" (356 mm)
D	22	970	13.00" (330 mm)
E	18.5	970	12.00" (305 mm)

Back-Pull-Out Casing
3-Blade Impeller
10" ANSI Discharge
12" ANSI Suction

DO NOT OPERATE PUMP IN DOTTED PORTION OF CURVES. CURVES SUBJECT TO CHANGE WITHOUT NOTICE. EFFICIENCIES SHOWN ARE NOMINAL BOWL. GUARANTIED MINIMUM EFFICIENCIES PER H.I. LEVEL B.





Vaughan E Series Chopper Pump PERFORMANCE CURVE

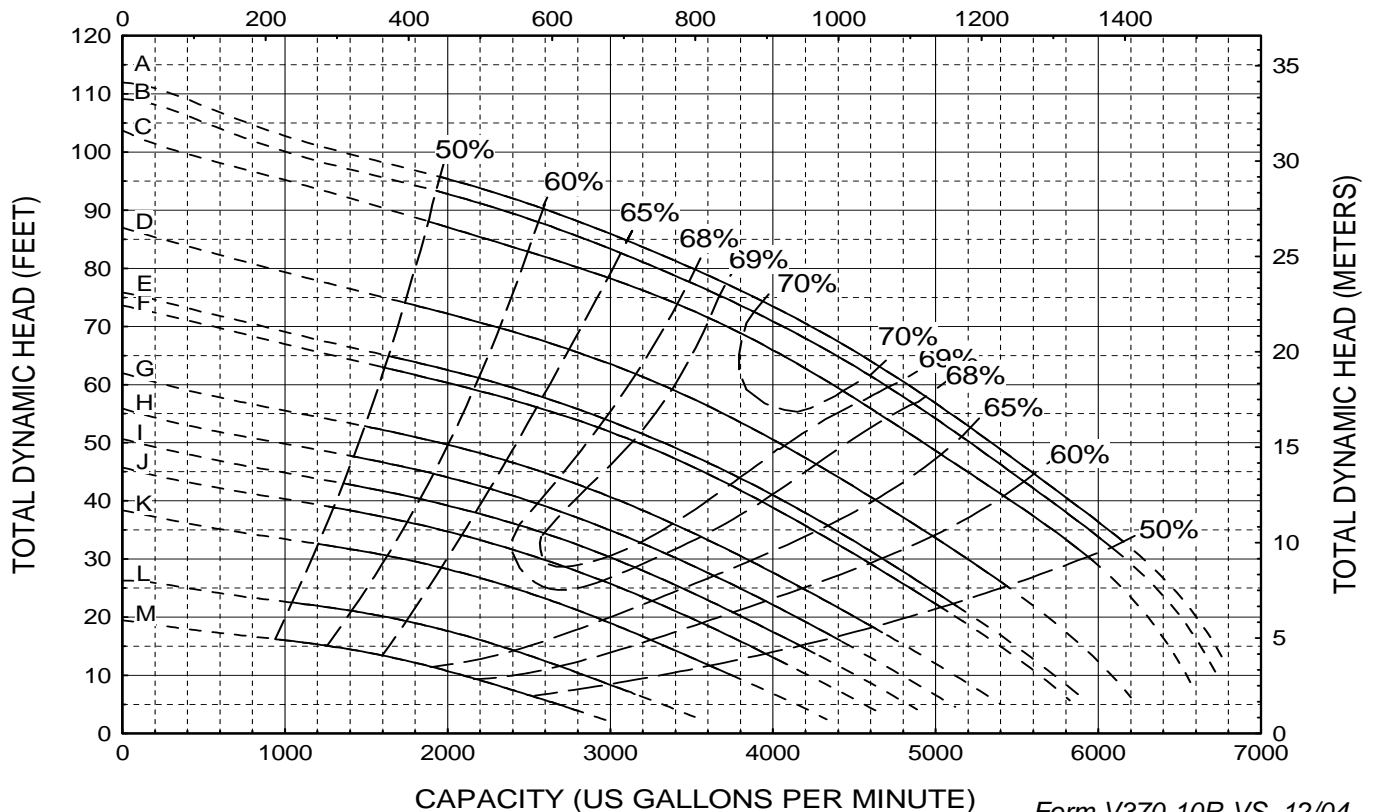
Models:
HE10R12
PE10R12
SE10R
V10R

Back-Pull-Out Casing
3-Blade Impeller
10" Discharge
12" Suction
Variable Speed Curve

CURVE	POWER (HP/KW)	SPEED (RPM)	IMPELLER DIAMETER
A	125 / 90	1185	16.00" (406 mm)
B	125 / 90	1170	16.00" (406 mm)
C	100 / 75	1140	16.00" (406 mm)
D	75 / 55	1045	16.00" (406 mm)
E	75 / 55	980	16.00" (406 mm)
F	60 / 45	965	16.00" (406 mm)
G	50 / 37	885	16.00" (406 mm)
H	40 / 30	840	16.00" (406 mm)
I	40 / 30	800	16.00" (406 mm)
J	30 / 22	760	16.00" (406 mm)
K	25 / 18.5	700	16.00" (406 mm)
L	20 / 15*	585	16.00" (406 mm)
M	15 / 11*	500	16.00" (406 mm)

DO NOT OPERATE PUMP IN DOTTED PORTION OF CURVES. CURVES SUBJECT TO CHANGE WITHOUT NOTICE. EFFICIENCIES SHOWN ARE NOMINAL BOWL. GUARANTIED MINIMUM EFFICIENCIES PER H.I. LEVEL B. * MOTORS INCREASED BY ONE SIZE FOR EXTRA CHOPPING TORQUE.

CAPACITY (CUBIC METERS PER HOUR)



CAPACITY (US GALLONS PER MINUTE)



Vaughan

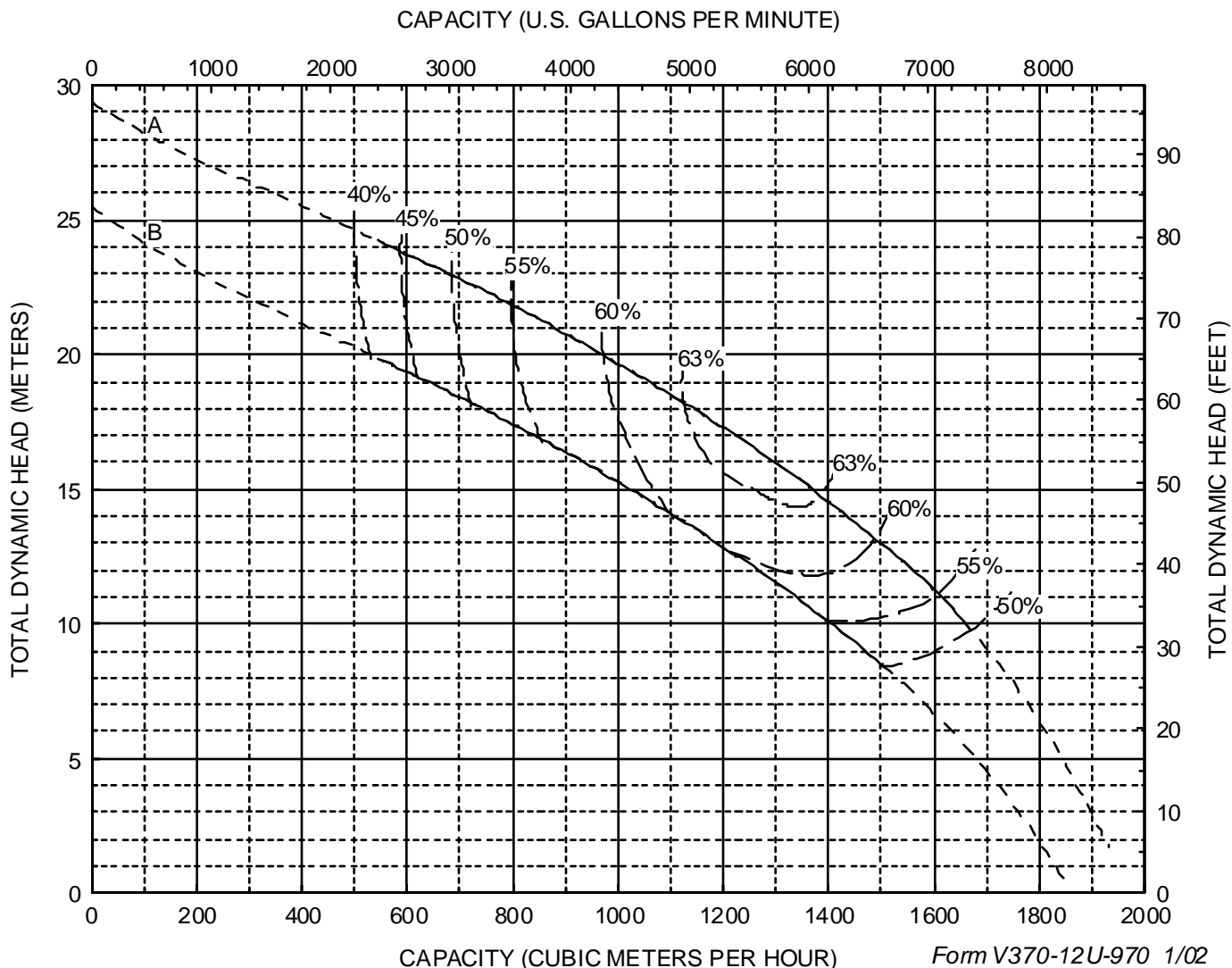
Vaughan E Series 50 Hz Chopper Pump PERFORMANCE CURVE

Models:
HE12U14
PE12U14
SE12U
V12U

CURVE	POWER (KW)	SPEED (RPM)	IMPELLER DIAMETER
A	90	970	18.00" (457 mm)
B	75	970	17.00" (532 mm)

DO NOT OPERATE PUMP IN DOTTED PORTION OF CURVES. CURVES SUBJECT TO CHANGE WITHOUT NOTICE. EFFICIENCIES SHOWN ARE NOMINAL. GUARANTIED MINIMUM EFFICIENCIES PER H.I. LEVEL B.

Back-Pull-Out Casing
4 Blade Impeller
12" ANSI Discharge
14" ANSI Suction





Vaughan

Vaughan E Series Chopper Pump PERFORMANCE CURVE

Models:
HE12U14
PE12U14
SE12U
V12U

CURVE	POWER (HP/KW)	SPEED (RPM)	IMPELLER DIAMETER
A	125 / 90	750	21.00" (533mm)
B	100 / 75	725	21.00" (533mm)
C	100 / 75	700	21.00" (533mm)
D	75 / 55	650	21.00" (533mm)
E	60 / 45	592	21.00" (533mm)
F	50 / 37	547	21.00" (533mm)

Back-Pull-Out Casing
4 Blade Impeller
12" Discharge
14" Suction

DO NOT OPERATE PUMP IN DOTTED PORTION OF CURVES. CURVES SUBJECT TO CHANGE WITHOUT NOTICE. EFFICIENCIES SHOWN ARE NOMINAL. GUARANTIED MINIMUM EFFICIENCIES PER H.I. LEVEL B.

